

NON-CONTROLLED COPY INFORMATION SUBJECT TO CHANGE WITHOUT NOTICE COPY WILL <u>NOT</u> BE UPDATED	COPY ISSUED BY _____ COPY ISSUED ON _____
--	--

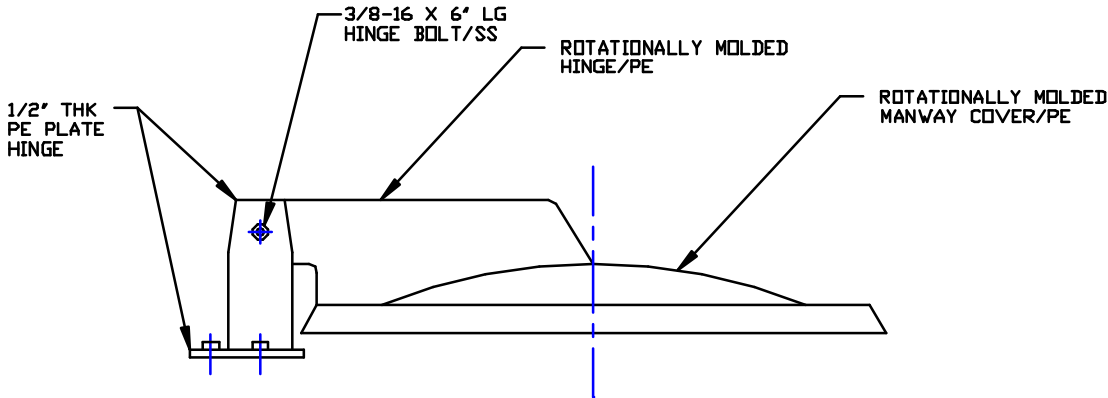
1/4" NOM THK ROTATIONALLY MOLDED LINEAR POLYETHYLENE HINGE/BLACK
ATTACH TO MANWAY COVER
W/(4) 1/4-20 ELEVATOR
BOLTS/SS EQUALLY
SPACED FROM RIM TO
END OF HINGE

1/4" NOM THK
ROTATIONALLY MOLDED
LINEAR POLYETHYLENE
MANWAY COVER/BLACK

1/2" THK POLYETHYLENE
PLATE HINGE--ATTACH TO
TANK W/1/2-13 X 2" LG
BOLT (3) PLACES

NOTE: BOSSES REMOVED
FROM MOLDED COVER

36"



NOTES

1. THIS IS A COMPUTER GENERATED DWG. DO NOT REVISE BY HAND.
2. PPC STOCK NO. 3220.

CONFIDENTIAL PROPERTY OF
POLY PROCESSING COMPANY
NOT FOR REPRINT OR USE
WITHOUT PERMISSION

DWG TITLE		24"/HINGED MANWAY COVER	
SCALE: 1 1/2"=1'-0"		General Inquiry P.O. Box 400, Grand Rapids, MI 49508-0400 Phone: 616-776-7200 Fax: 616-776-0750	DR: MB WILKERSON
DATE: 10/4/00		CK: J. BRANTLEY	
SHEET		COMPUTER FILE	REV
1 OF 1		24HMWY	-