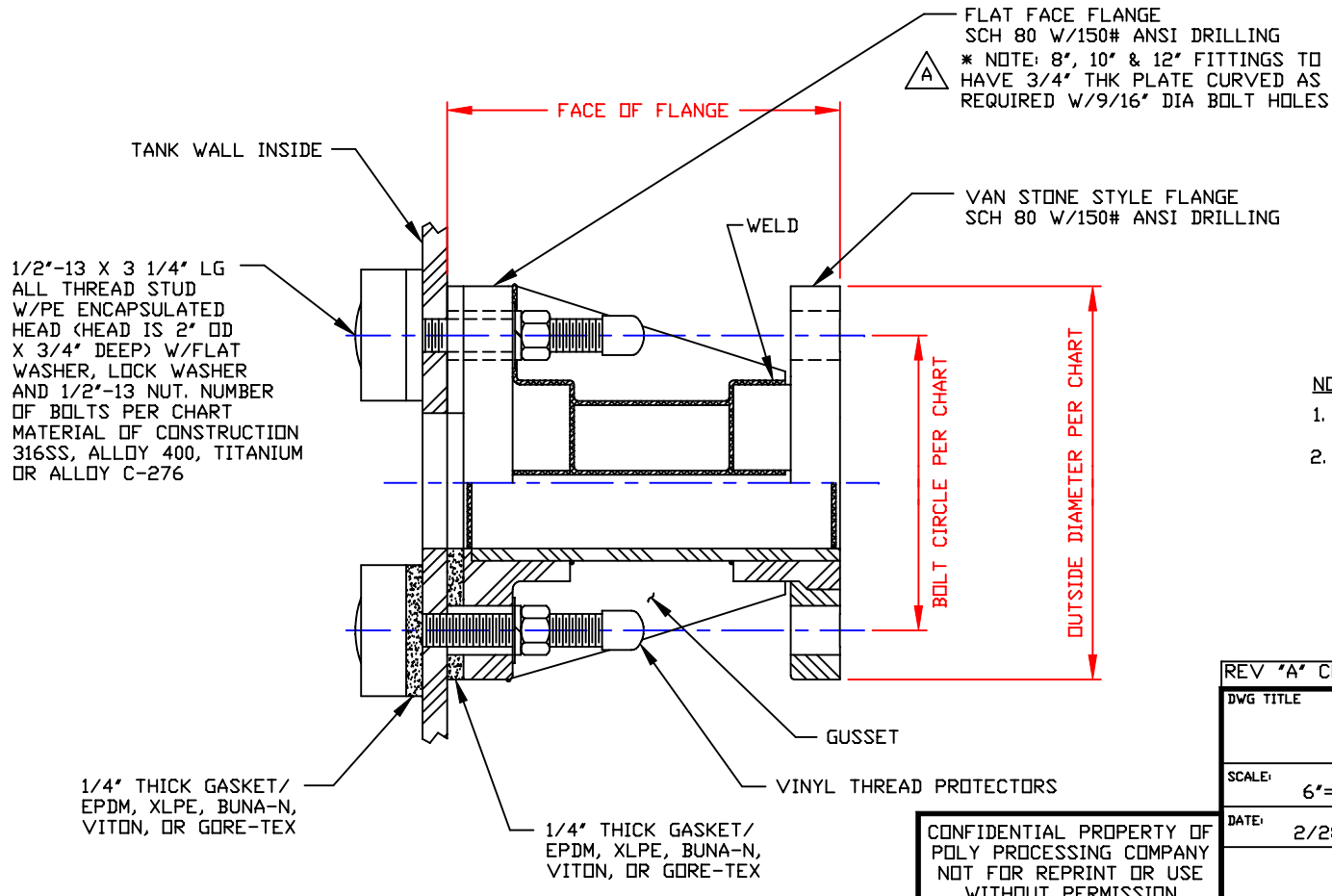


NON-CONTROLLED COPY
 INFORMATION SUBJECT TO CHANGE WITHOUT NOTICE
 VERIFY REV LEVEL OF PAPER COPY WITH REV LEVEL ON PPC WEB SITE


PIPE SIZE	FACE OF FLANGE DIMENSION	OUTSIDE DIAMETER	BOLT CIRCLE	NO. OF BOLTS	NO. OF GUSSETS	THICKNESS OF GUSSETS
1"	6"	4 1/4"	3 1/8"	4	4	1/4"
1 1/2"	6 1/2"	5"	3 7/8"	4	4	1/4"
2"	6 1/2"	6"	4 3/4"	4	4	1/4"
3"	6 1/2"	7 1/2"	6"	4	4	1/2"
4"	6 1/2"	9"	7 1/2"	8	4	1/2"
6"	6 1/2"	11"	9 1/2"	8	4	1/2"
* 8"	10"	13 1/2"	11 3/4"	8	4	1/2"
* 10"	10"	16"	14 1/4"	12	4	1/2"
* 12"	10"	19"	17"	12	4	1/2"

△ A



NOTES

1. THIS IS A COMPUTER GENERATED DRAWING. DO NOT REVISE BY HAND.
2. BOLTED SPOOL FITTINGS MAY BE USED ON THE TANK SIDE WALL, ON THE BOTTOM, OR ON THE CENTER OF THE DOME. BOLTED SPOOL FITTINGS MAY ALSO BE USED ELSEWHERE ON THE DOME IF IT IS NOT NECESSARY THAT THE FITTING WILL FOLLOW THE CURVE OF THE DOME.

REV "A" CORRECTED 8", 10", & 12" FITTINGS BY:MBW 5/2/05 CK:JB			
DWG TITLE BOLTED SPOOL FITTING WITH GUSSETS (PVC OR CPVC)			
SCALE:	6"=12"	 POLYPROCESSING COMPANY	DR: J. BRANTLEY
DATE:	2/28/01		CK: MB WILKERSON
		SHEET	COMPUTER FILE
		1 OF 1	BLTDSP3 A

CONFIDENTIAL PROPERTY OF
 POLY PROCESSING COMPANY
 NOT FOR REPRINT OR USE
 WITHOUT PERMISSION