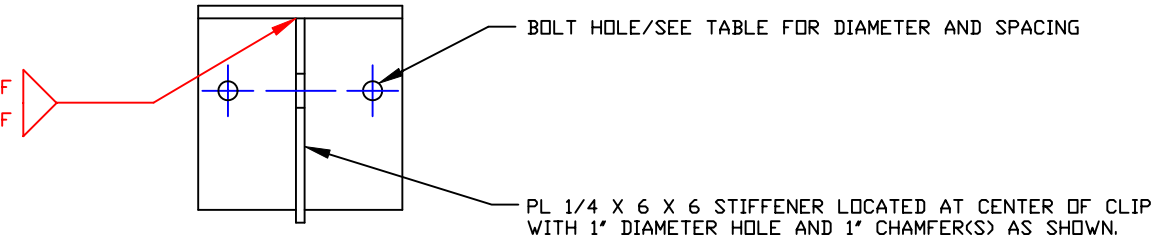
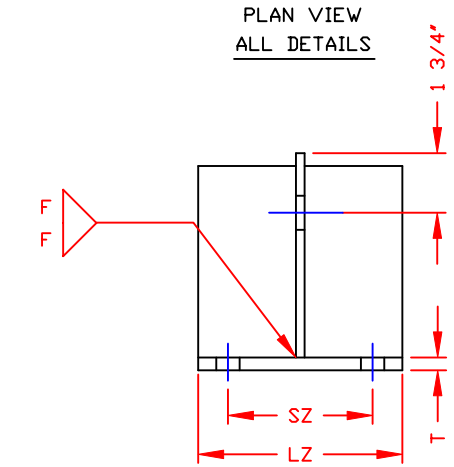


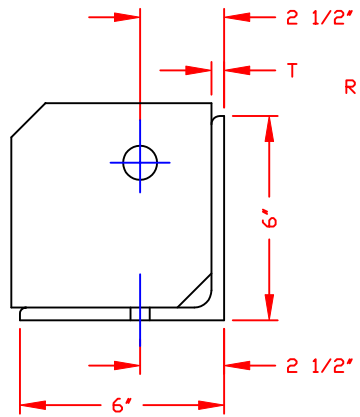
NON-CONTROLLED COPY INFORMATION SUBJECT TO CHANGE WITHOUT NOTICE COPY WILL <u>NOT</u> BE UPDATED	COPY ISSUED BY..... COPY ISSUED ON.....
--	--



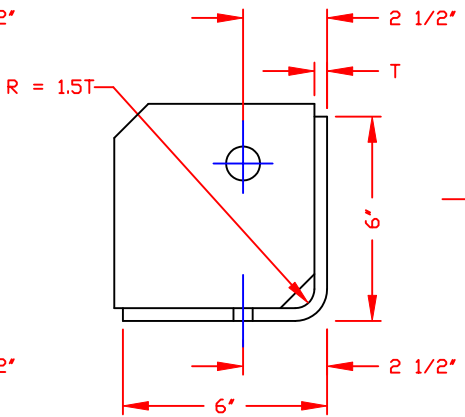
NOTE: DETAILS 1, 2 AND 3 TO ALLOW FOR BEST ECONOMIC FABRICATION IN EPOXY COATED CARBON STEEL, TYPE 304 SS AND TYPE 316 SS.



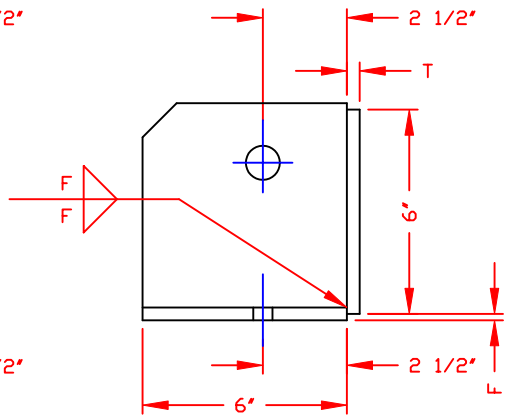
FRONT VIEW
ALL DETAILS



HOT ROLLED ANGLE
DETAIL 1
SIDE VIEW



FORMED ANGLE
DETAIL 2
SIDE VIEW



WELDED PLATE
DETAIL 3
SIDE VIEW

RESTRAINT CLIP DESIGNATION	T	LZ	DBH	SZ	F
RC 6 X 6 X 3/8 X 6	3/8	6	9/16	4 1/4	3/16
RC 6 X 6 X 3/8 X 12	3/8	12	9/16	4 1/4	3/16
RC 6 X 6 X 3/8 X 18	3/8	18	11/16	5	3/16
RC 6 X 6 X 3/8 X 24	3/8	24	13/16	7	3/16
RC 6 X 6 X 1/2 X 6	1/2	6	9/16	4 1/4	1/4
RC 6 X 6 X 1/2 X 12	1/2	12	11/16	5	1/4
RC 6 X 6 X 1/2 X 18	1/2	18	13/16	7	1/4
RC 6 X 6 X 1/2 X 24	1/2	24	1 1/16	9	1/4

NOTE:
BOLT HOLES TO BE EQUALLY SPACED FROM ENDS OF RESTRAINT CLIP.

T = THICKNESS, INCHES
LZ = CLIP LENGTH, INCHES
DBH = BOLT HOLE DIAMETER, INCHES
SZ = BOLT HOLE CENTER LINE SPACING, INCHES
F = FILLET WELD SIZE, INCHES

NOTES:
1. THIS IS A COMPUTER GENERATED DRAWING. DO NOT REVISE BY HAND.

DWG TITLE		RESTRAINT CLIPS FOR VERTICAL TANK RESTRAINT SYSTEMS	
SCALE: 3"=1'-0"	POLY PROCESSING Company	Central Region P.O. Box 4159 (71221) 2801 Old Sherlington Rd. Monroe, LA 71283 CUB 343-7545 FAX CUB 343-8795	DR: J. BRANTLEY
DATE: 5/18/01		CK: MB WILKERSON	
SHEET		COMPUTER FILE	REV
1 OF 1		RESTSYSB	-