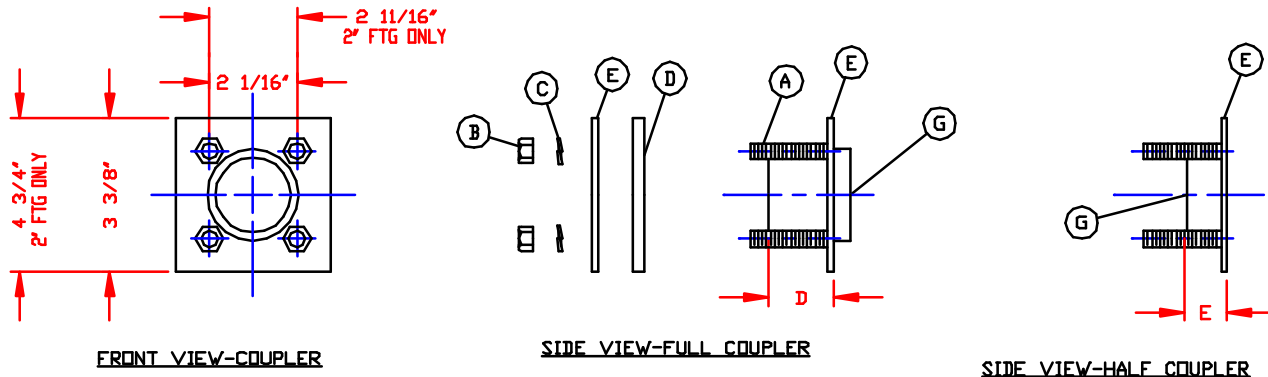
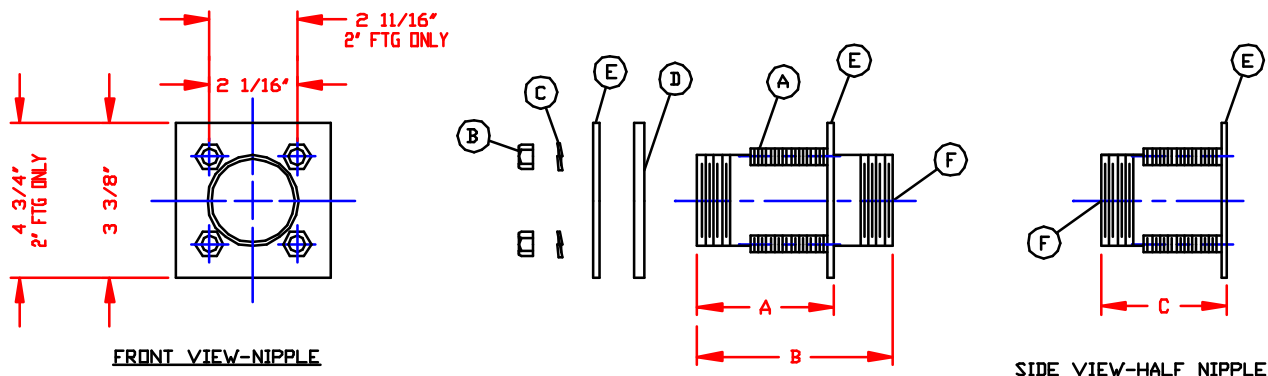


NON-CONTROLLED COPY INFORMATION SUBJECT TO CHANGE WITHOUT NOTICE COPY WILL NOT BE UPDATED	COPY ISSUED BY..... COPY ISSUED ON.....
---	--



SIZE OF FITTING	DIM 'A'	DIM 'B'	DIM 'C'	DIM 'D'	DIM 'E'
1/2"	2 1/2"	4"	2"	1 1/4"	11/16"
3/4"	2 1/2"	4"	3"	1 3/8"	3/4"
1"	2 7/8"	4"	2 3/4"	1 3/8"	13/16"
1 1/2"	2 7/8"	4"	3"	1 5/8"	1"
2"	4"	6"	3 7/8"	2"	1 1/4"

- (A) 5/16-18 X 2 ALL THREAD STUD FOR 1/2" THRU 1 1/2" FTGS, 1/2-13 X 2 1/2 ALL THREAD STUD FOR 2"
- (B) 5/16-18 OR 1/2-13 HEX NUT
- (C) 5/16" OR 1/2" LOCK WASHER
- (D) GASKET MATERIAL AND THICKNESS PER PD
- (E) FRONT AND BACK PLATES TO BE 1/8" THK
- (F) SCH 40 PIPE
- (G) STANDARD HALF OR FULL COUPLER

**NOTES:**

- THIS IS A COMPUTER GENERATED DRAWING. DO NOT REVISE BY HAND.
- MATERIAL MAY BE 316SS OR 316LSS. PIECE PARTS BASED ON AVAILABILITY AT THE TIME OF MANUFACTURE. IF ALL 316LSS IS REQUIRED, IT MUST BE SPECIFIED AT TIME OF ORDER. ON 316LSS FITTINGS, LOCK WASHER WILL BE 316SS W/TEFLON COATING.

DWG TITLE		1/2" THRU 2" STAINLESS STEEL BULKHEAD FITTING	
SCALE:	3"=1'-0"		DR: MB WILKERSON
DATE:	2/12/01		CK: J. BRANTLEY
		SHEET	COMPUTER FILE
		1 OF 1	SSBH1 -