
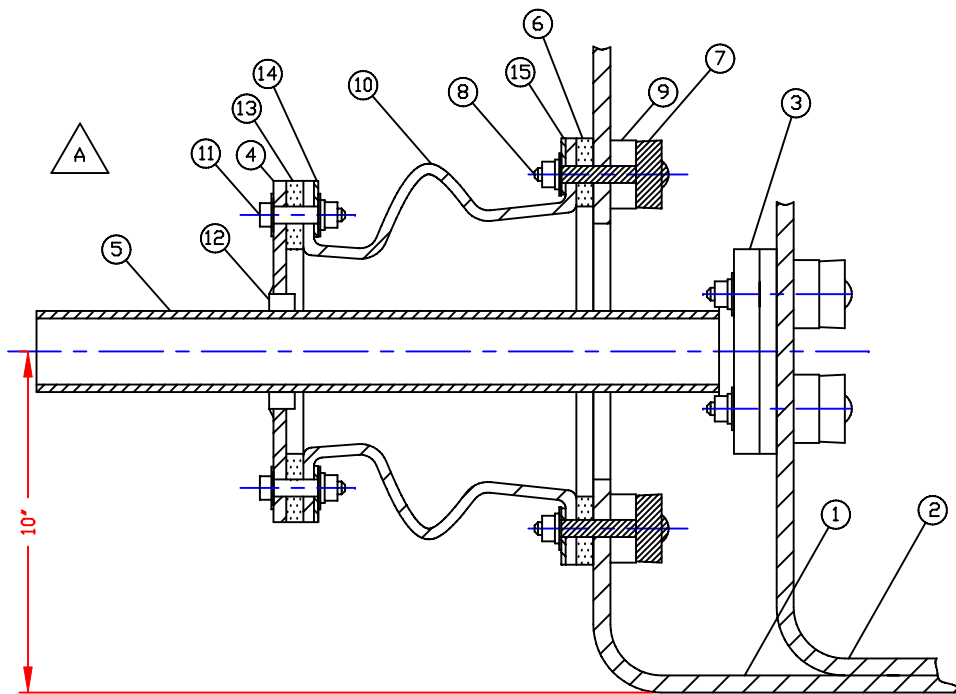
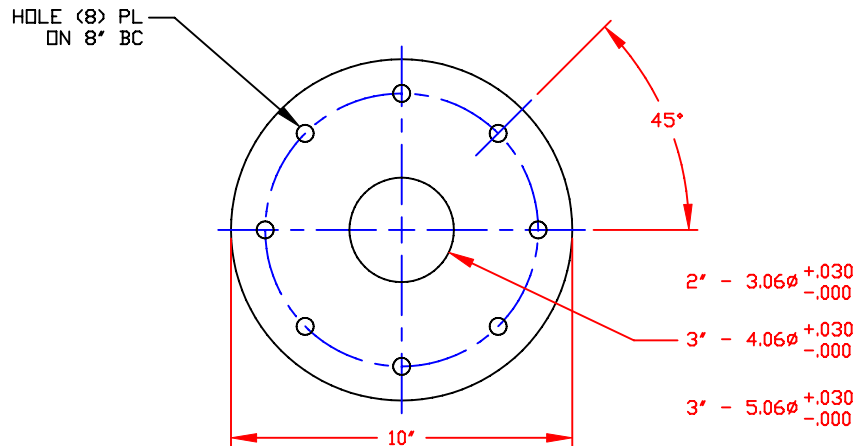


DWG TITLE			
2", 3" & 4" TRANSITION FITTING			
SCALE:	3"=1'-0"	 <p>Central Region P.O. Box 4120 C7821D 8201 Old Sterlington Rd Monroe, LA 71203 C280 243-7965 FAX C280 243-8795</p>	DR:
DATE:	5/12/05		J. BRANTLEY
		CK:	MB WILKERSON
		SHEET	COMPUTER FILE
		1 OF 2	TRANSFTG A



SECTION A-A




PLATE/3/8" THK BLACK PE

PART #7598 - 2"  
 PART #7599 - 3"  
 PART #7600 - 4"

MARK	QTY	PART NO.	DESCRIPTION
1	1	--	OUTER TANK
2	1	--	INNER TANK
3	1	--	AS SPECIFIED BY CUSTOMER (NOT INCLUDED)
4	1	--	3/8" THK PLATE/BLACK PE
5	1	--	20' LG NIPPLE/THR'D
6	1	--	GASKET (TANK END)
7	10	--	1/2" X 3" STUD BOLT
8	10	--	1/2" FLAT WASHER
	10	--	1/2" LOCK WASHER
	10	--	1/2-13 UNC NUT
9	10	--	STUD BOLT GASKET
10	1	7002420	TRANS FITTING BELLOWS STYLE/LLDPE/NATURAL
11	8	--	1/2"-13 X 2" BOLT
	16	--	1/2" FLAT WASHER
	8	--	1/2" LOCK WASHER
	8	--	1/2"-13 NUT
12	1	--	GROMMET/UNISEAL/RUBBER
13	1	--	GASKET (PLATE END)
14	1	7596	SPLIT BACK-UP RING/SS (PLATE END)
15	1	7597	SPLIT BACK-UP RING/SS (TANK END)

ASSEMBLY			
SIZE	BOLT	GASKET	PART #
2	SS	PE	7604
2	SS	EPDM	7661
2	SS	LV	7662
2	TITAN	EPDM	7663
2	TITAN	LV	7664
2	C-276	EPDM	7665
2	C-276	LV	7666
3	SS	PE	7605
3	SS	EPDM	7667
3	SS	LV	7668
3	TITAN	EPDM	7669
3	TITAN	LV	7670
3	C-276	EPDM	7671
3	C-276	LV	7672
4	SS	PE	7606
4	SS	EPDM	7673
4	SS	LV	7674
4	TITAN	EPDM	7675
4	TITAN	LV	7676
4	C-276	EPDM	7677
4	C-276	LV	7678

NOTES:  
 1. THIS IS A COMPUTER GENERATED DRAWING. DO NOT REVISE BY HAND.

REV "A" CORRECTED SECTION A-A BY:MBW 5/30/06 CK:BT			
DWG TITLE			
2", 3" & 4" TRANSITION FITTING			
SCALE:	3"=1'-0"	 <b>POLYPROCESSING</b> COMPANY	DR: J. BRANTLEY
DATE:	5/12/05		CK: MB WILKERSON
		SHEET	COMPUTER FILE
		2 OF 2	TRANSFTG A