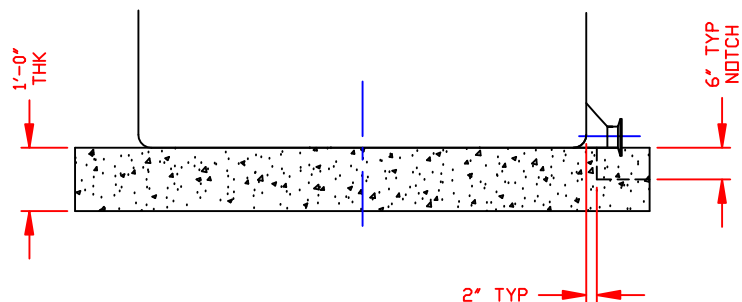



NOTE:
ELEVATED CONCRETE PAD
TO BE 24" LARGER THAN
TANK DIAMETER

NOTCH LOCATION TO BE
DETERMINED BY DEGREE
LOCATION OF IMFO



NOTE:
NOTCH STARTS 2"
FROM TANK STRAIGHT WALL

NOTE:
DRAWING IS FOR DIMENSION REFERENCE ONLY
NOT INTENDED FOR FABRICATION

DWG TITLE			
SQUARE CONCRETE IMFO PAD			
SCALE:	1/2"=1'-0"	 POLY PROCESSING SOLUTIONS, SIMPLIFIED	IR:
DATE:	2/10/11		J, BRANTLEY
		<small>Central Region P.O. Box 4550 (75251) 2501 Old Springton Rd. Newport, LA 70052 CEN 343-7562 FAX CEN 343-9795</small>	CK:
			XXXX
		SHEET	COMPUTER FILE
		1 OF 1	IMFOPADSQ
			REV
			-