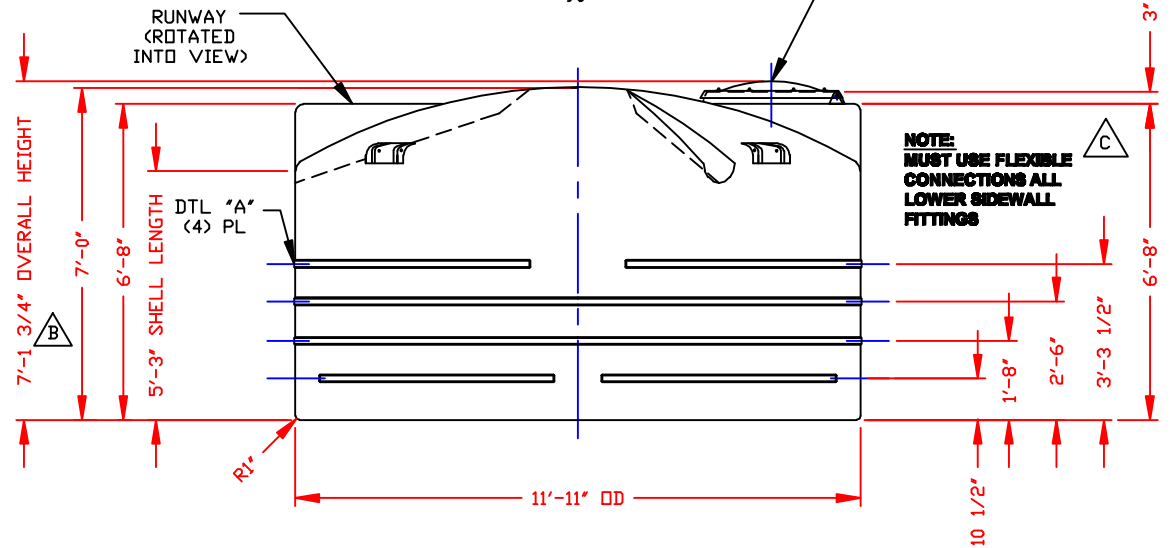
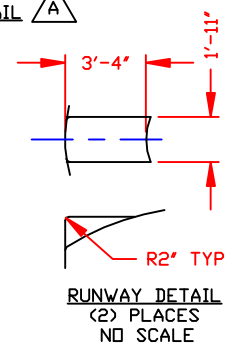
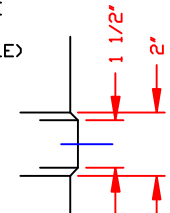
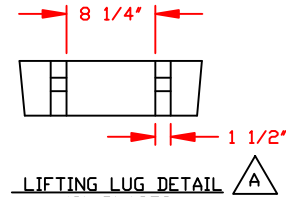
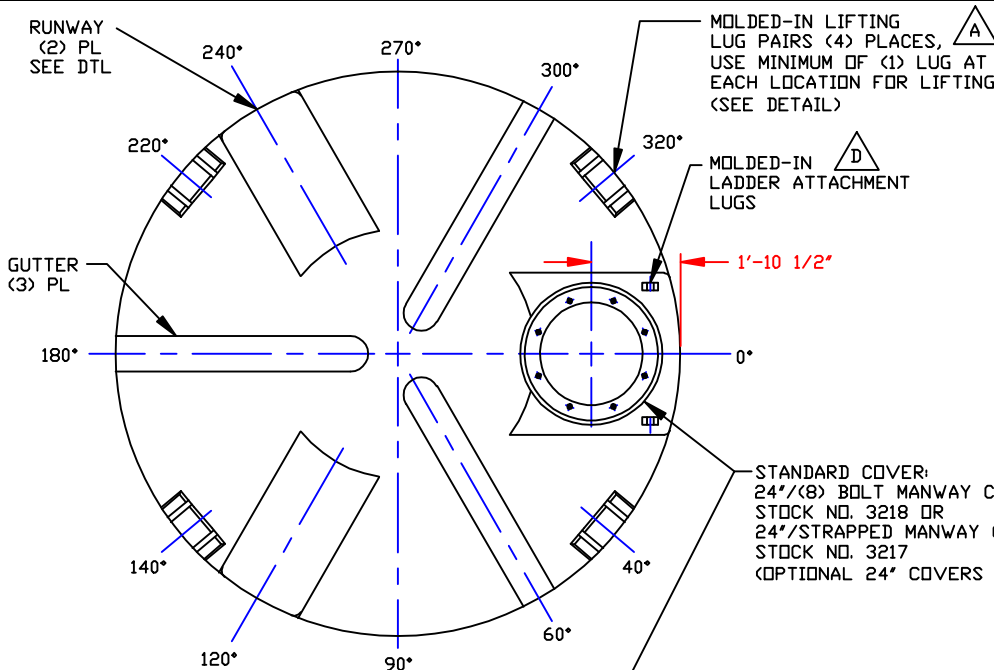


REV. 'A' ADDED LIFTING LUGS & DETAIL BY:JB 9/24/02 CK:MM  
 REV. 'B' ADDED DIMENSION BY:JB 10/18/02 CK:MMB  
 REV. 'C' ADDED FITTING NOTE BY:MMB 2/17/03 CK:JB  
 REV. 'D' ADDED LADDER ATTACHMENT LUGS BY:JB 5/14/04 CK:MM  
 REV. 'E' REVISED FOR MOLD UPDATE BY:JB 9/29/09 CK:MM



NOTES  
 1. THIS IS A COMPUTER GENERATED DWG. DO NOT REVISE BY HAND.  
 2. DIMENSIONS WILL VARY ±3% DUE TO VARIATIONS IN MULTIPLE MOLDS & CONDITIONS PREVALENT DURING MANUFACTURE & USAGE.  
 3. NO MOLDED IN GALLONAGE MARKERS THIS TANK.

CALCULATED CAPACITIES/ VOLUME IN U.S. GALLONS		
DESIGN CAP	DOME VOL	TOTAL VOL
4322	675	4997

CONFIDENTIAL PROPERTY OF  
 POLY PROCESSING COMPANY  
 NOT FOR REPRINT OR USE  
 WITHOUT PERMISSION

DWG TITLE			
4250 GALLON UPRIGHT TANK			
SCALE:	3/8"=1'-0"		DR:
DATE:	9/27/99		MB WILKERSON
		Central Region P.O. Box 4550 (71251) 2501 Old Washington Rd. Norcross, LA 72605 (706) 343-7500 FAX (706) 343-9795	CK:
			D. RECTOR
		SHEET	COMPUTER FILE
		1 OF 1	1004250
			REV
			E