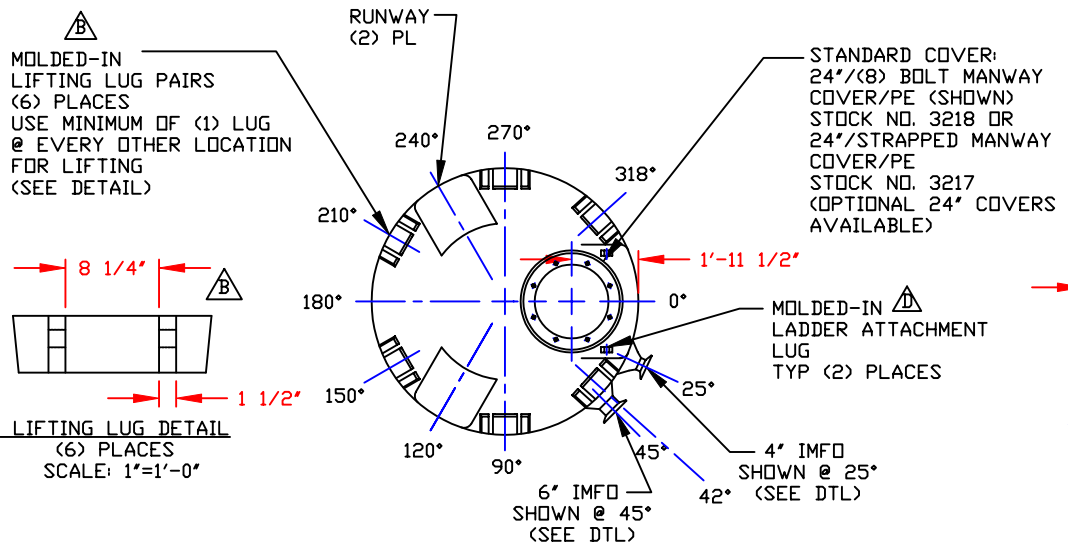
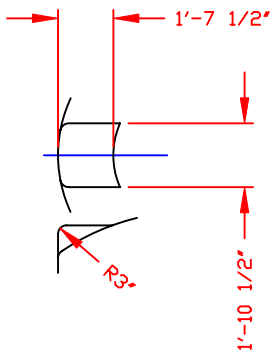


NON-CONTROLLED COPY  
 INFORMATION SUBJECT TO CHANGE WITHOUT NOTICE  
 VERIFY REV LEVEL OF PAPER COPY WITH REV LEVEL ON PPC WEB SITE

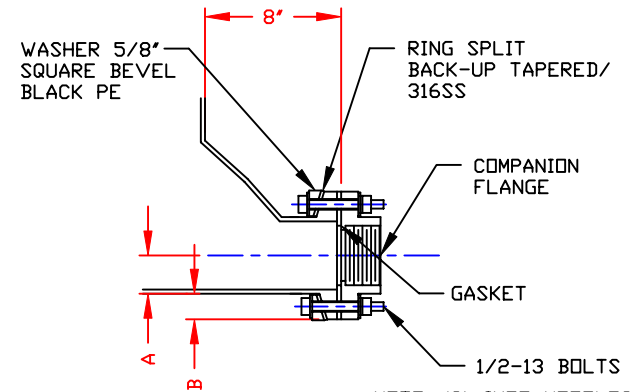


**LIFTING LUG DETAIL**  
 (6) PLACES  
 SCALE: 1"=1'-0"



**RUNWAY DETAIL**  
 (2) PLACES

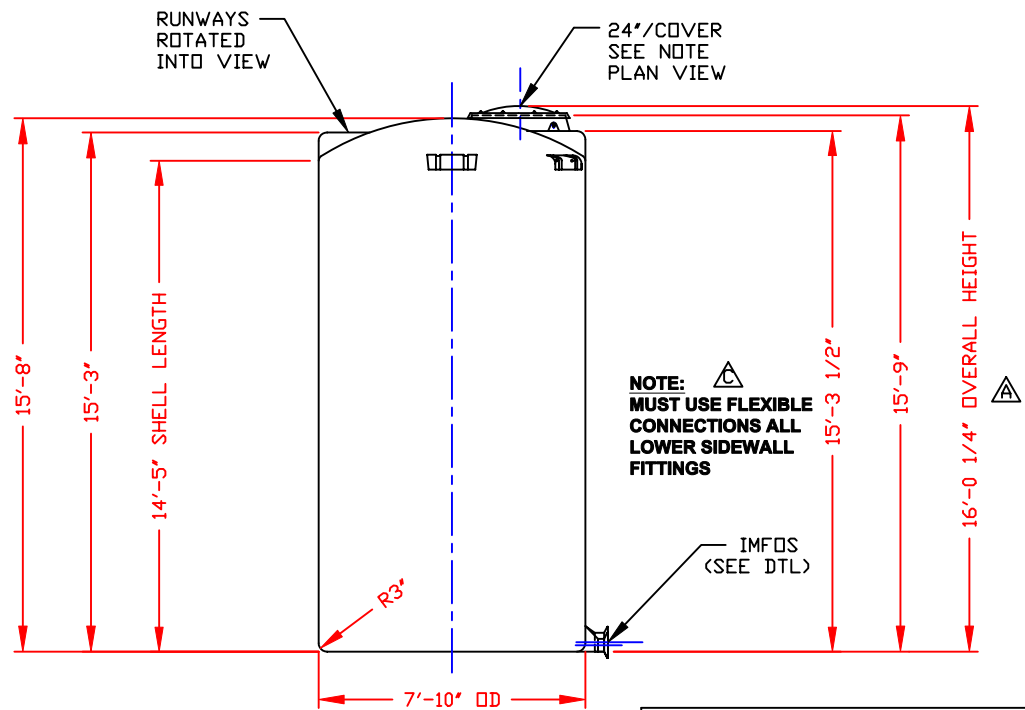
NOZZLE SCHEDULE & ACCESSORIES					
SERVICE	MK	STOCK NO.	SIZE	FITTING	DEG ELEV



DIMENSION CHART		
PIPE SIZE	A	B
4"	2 1/4"	2 1/4"
6"	3 5/16"	2 3/16"

NOTE: (2) IMFO NOZZLES MAY BE MOLDED IN TANK (1) @ 25° & (1) @ 45°. IF (2) IMFO'S ARE USED (1) TO BE 4" & (1) TO BE 6". EITHER OR BOTH MAY BE BLOCKED OFF.

**IMFO NOZZLE DETAIL**  
 (INTEGRALLY MOLDED FLANGED OUTLET)  
 SCALE: NONE



**NOTE:** MUST USE FLEXIBLE CONNECTIONS ALL LOWER SIDEWALL FITTINGS

IMFO NOZZLES ROTATED INTO VIEW--FOR TRUE ORIENTATION SEE PLAN

- NOTES**
- THIS IS A COMPUTER GENERATED DWG. DO NOT REVISE BY HAND.
  - DIMENSIONS WILL VARY ±3% DUE TO VARIATIONS IN MULTIPLE MOLDS AND CONDITIONS PREVELANT DURING MANUFACTURE AND USAGE.
  - MOLDED IN GALLONAGE MARKERS IN 200 GAL INCREMENTS UP TO 5000 GAL IN MANWAY AREA.

CALCULATED CAPACITIES/VOLUME IN U.S. GALLONS		
DESIGN CAP	DOME VOL	TOTAL VOL
5052	192	5244

CONFIDENTIAL PROPERTY OF POLY PROCESSING COMPANY  
 NOT FOR REPRINT OR USE WITHOUT PERMISSION

DWG TITLE <b>5050 GALLON DOUBLE IMFO TANK</b>			
SCALE: 1/4"=1'-0"	 <b>POLY PROCESSING COMPANY</b>	Central Region P.O. Box 4150 (71213) 200 East Shreveport Rd. Harvey, LA 71303 (504) 343-7565 FAX (504) 343-8795	DR: MB WILKERSON CK: D. RECTOR
DATE: 11/11/99		SHEET 1 OF 1	COMPUTER FILE 1105050

- REV "D" ADDED LADDER ATTACHMENT LUGS BY:JB 1/25/05 CK:WM
- REV "C" ADDED FITTING NOTE BY:MBW 3/3/03 CK:JB
- REV "B" ADDED LIFTING LUGS & DETAIL BY:JB 1/13/03 CK:WM
- REV "A" ADDED DIMENSION BY:JB 10/21/02 CK:MBW