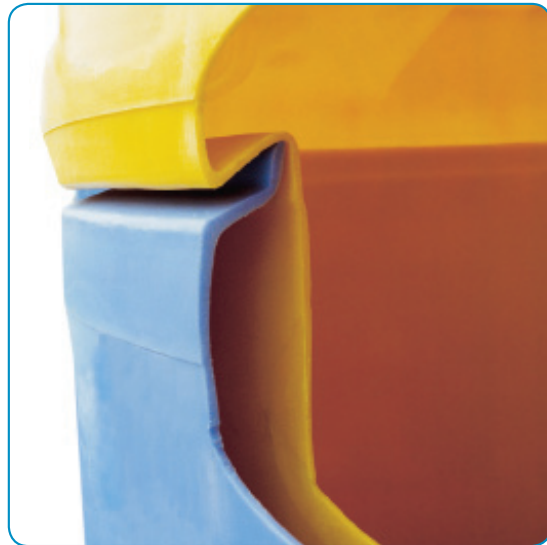


INNOVATIVE TANK SOLUTIONS

SAFE-Tank®: a complete system for secondary containment.



Poly Processing's SAFE-Tank® is a "tank-within-a-tank" system that keeps contaminants from entering the interstitial area. These tanks provide secondary containment to avoid the damaging of equipment or property, loss of chemical, or injury to employees in the event of a spill.

The SAFE-Tank®:

- Provides 110% secondary containment.
- Will equalize the liquid and allow the chemical to be continually used until it is convenient to repair the tank.
- Eliminates the expense, cost and maintenance of secondary concrete containment.
- Minimizes the system's footprint by providing secondary containment in a more compact way.

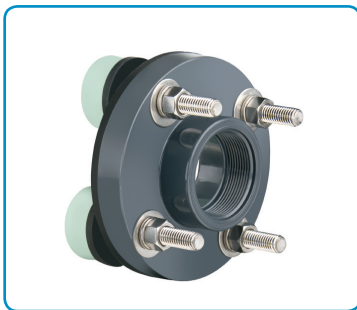


POLYPROCESSING
SOLUTIONS, SIMPLIFIED.

www.polyprocessing.com

**SAFE-Surge™ MANWAY COVERS:
TANK Lid for package**

Ensure that your tank maintains the proper ACFM at all times.



BOLTED FLANGE FITTINGS

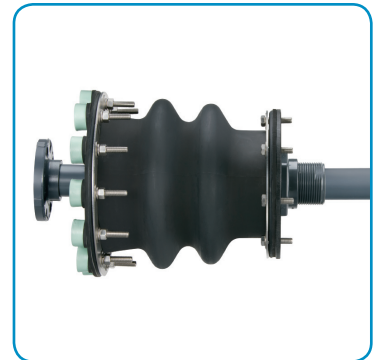
Pump Suction Fitting

An economical flange fitting for pump connection.

ENHANCED BELLOWS TRANSITION FITTING

Connected to Pump Suction Fitting

Bottom drain connection fitting that maintains 110% minimum containment requirements, while allowing you to connect to your plumbing with a fully enclosed expansion joint, that expands freely during loading and unloading, and eliminates damage from piping vibrations caused by pumps.



UNIVERSAL BALL DOME FLANGE

2" Fill Flange and 2" Level Fitting

An economical flange fitting which allows for vertical plumbing.

BULKHEAD FITTINGS

2" Spare Bulkhead, 3" Overflow Bulkhead and 4" Vent Bulkhead

An economical fitting best that can be installed on sidewall, overflow or dome.

