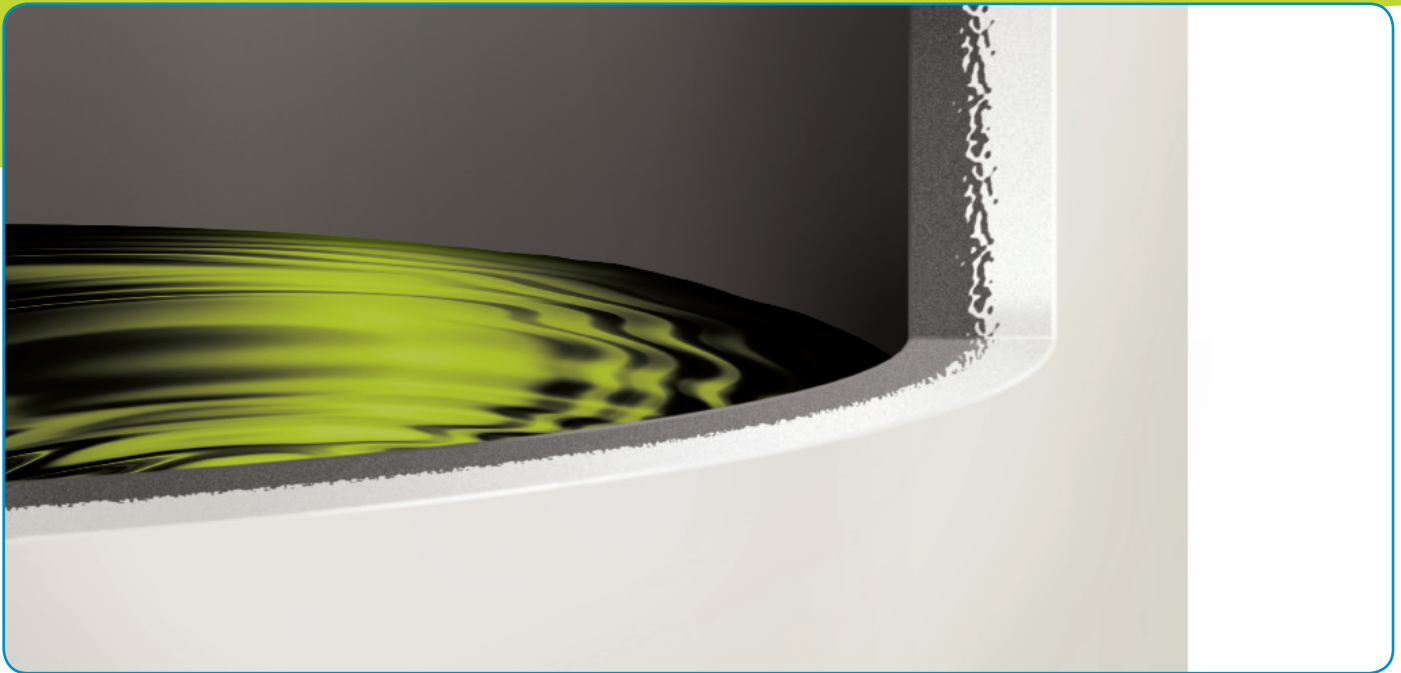


### OR-1000™

An inner-surface technology for four times the antioxidant power.



Poly Processing's exclusive OR-1000™ system was specifically designed to address the aggressive oxidation effects of sodium hypochlorite, sulfuric acid and hydrochloric acid by adding an additional chemical barrier between XLPE and the chemical. OR-1000's engineered inner surface is made of medium-density polyethylene, specifically formulated to resist oxidation. Its outer surface is made of XLPE for superior strength. The 2 surfaces are molecularly bound together during the rotomolding process, creating a truly seamless bond between the XLPE and the inner surface.

#### **The advantages of OR-1000™:**

- The result gives you 4 times the antioxidant strength of any polyethylene on the market today!
- All wetted surfaces are covered by OR-1000™, eliminating the opportunity for a chemical attack on the structural portion of the tank.
- OR-1000™ can be used on any of our tanks, including SAFE-Tank® and IMFO® tank systems.



**POLYPROCESSING**  
SOLUTIONS, SIMPLIFIED.

[www.polyprocessing.com](http://www.polyprocessing.com)

**SAFE-Surge™ MANWAY COVERS:  
TANK Lid for package**

Ensure that your tank maintains the proper ACFM at all times.

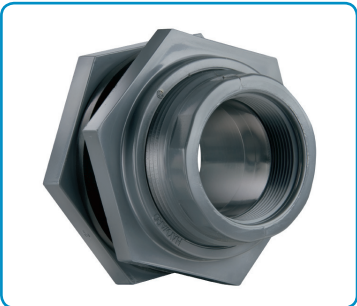


**THE B.O.S.S.™:  
Pump Suction Fitting**

With its streamlined one-piece design, the B.O.S.S.™ (bolted one-piece sure seal) reduces the seal point to a single gasket to greatly reduce chances for leakage.

**UNIVERSAL BALL DOME FLANGE  
2" Fill Flange and 2" Level Fitting**

An economical flange fitting which allows for vertical plumbing.



**BULKHEAD FITTINGS**

**2" Spare Bulkhead, 3" Overflow Bulkhead and 4" Vent Bulkhead**

An economical fitting best that can be installed on sidewall, overflow or dome.

**FLEXIJOINT® EXPANSION JOINT**

**Optional connection fitting not included in quote.**

These flexible PTFE connectors and tremor barriers are designed to compensate for misalignment, absorb expansion and contraction, and isolate the vibration and shock that could damage a tank. Their low spring rate protects stress-sensitive connections. Can be installed directly to the dome of the tank to overcome piping misalignment.

