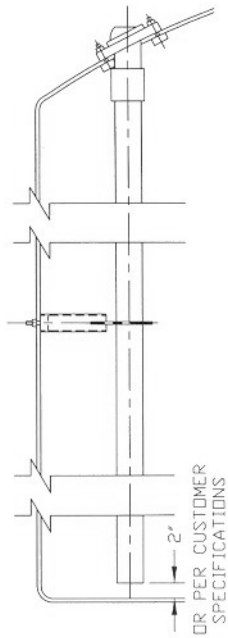
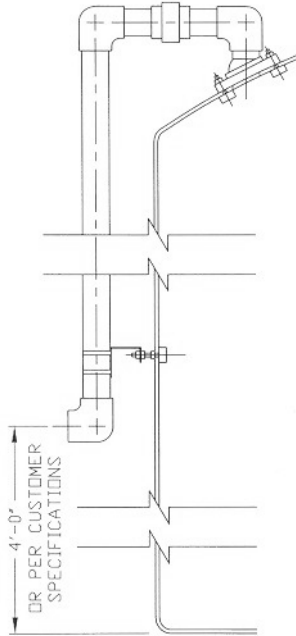


10. FILL LINE ASSEMBLIES & PIPE SUPPORT ASSEMBLIES

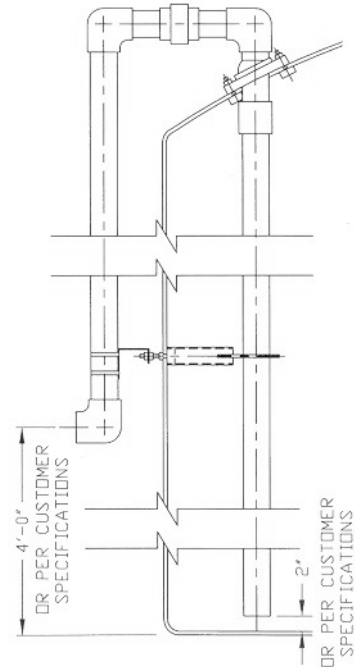
Poly Processing Company offers a variety of fill assemblies for both vertical and horizontal tanks. We term these assemblies "drop pipes" and offer internal, external, and combination drop pipe assemblies. Standard drop pipes require at least one drop pipe support bracket, usually a special bolt which extends through the tank wall and may be tightened with a wrench. Drop pipes and downpipe brackets are often shipped "loose" to prevent damage in transit. They will require a minimal amount of assembly. For your convenience and ease of assembly, drawings of standard drop pipe assemblies are shown below. (Also, see instructions on "Uninstalled Parts" on page 4.)



INTERIOR DROP PIPE



EXTERIOR DROP PIPE



COMBINATION DROP PIPE

The pipe support assembly below requires that the correct size be chosen for the size pipe involved and is not adjustable. If a field replacement is required, please have the following information available when placing your order: (A), Dimension "A" on the sketch below, the distance from the tank wall to the center line of the pipe hole; (B), The outside pipe diameter; (C), The type of metal of the bolt; (D), The gasket material.

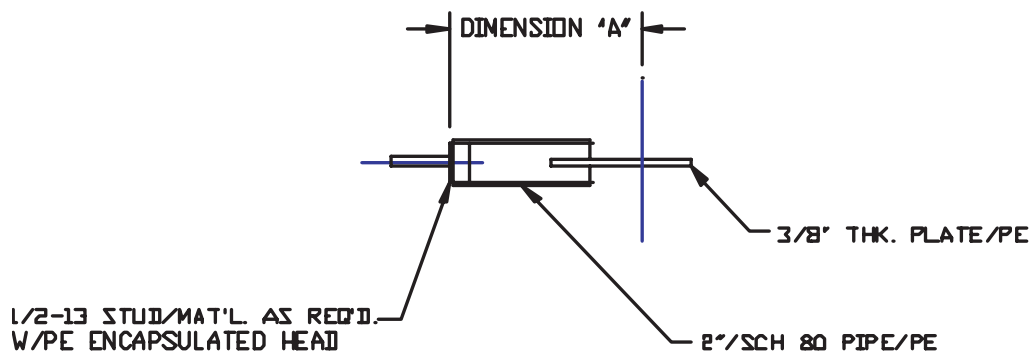


ILLUSTRATION
(F:\DWG\CUSTOM\GPS)