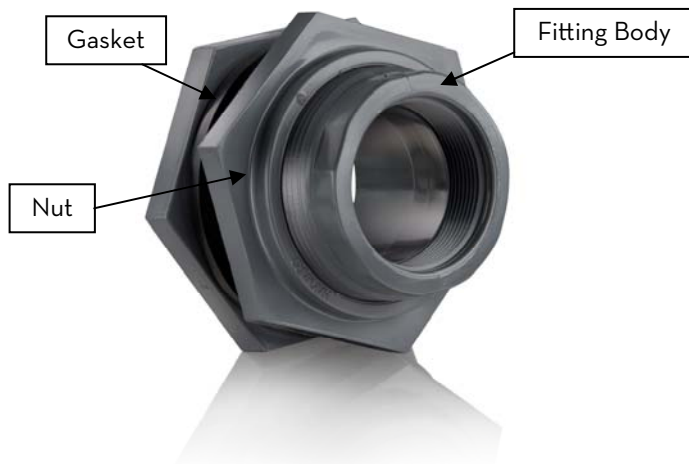


BULKHEAD FITTINGS

1. Slide the gasket over the body of the fitting.
2. From inside the tank, insert fitting body into hole in tank sidewall.
3. Lubricate threads on fitting body with thread sealant and install large nut on the outside of the tank.
4. Hand tighten plus 1/4 turn with a wrench. Most Bulkhead fittings use left hand threads.
5. Do not allow fitting body to slip or spin when tightening to prevent the gasket from creeping between the fitting and the tank wall.
6. Inspect gasket for creep. If found, loosen nut and perform steps 4 & 5 again.
7. When installing a pipe or flange adapter into the BHF, do not allow BHF to slip and do not over tighten.
8. Hydro test the tank for a minimum of 24 hours before placing into chemical service.

Bulkhead fittings and tank sidewall restrictions:

Tank size	BHF's, Tank Sidewall
SAFE-Tank® 160 gallons or less	BHF's up to 2" allowed
SAFE-Tank® 405 gallons and larger	BHF's not allowed
Upright tanks 450 gallons or less	BHF's up to 2" allowed
Upright tanks 451-3000 gallons	BHF's up to 3" allowed
Upright tanks larger than 3000 gallons	BHF's not allowed



BHF size	Hole saw size
1/2"	1 3/8"
3/4"	1 5/8"
1"	1 7/8"
1 1/4"	2 3/8"
1 1/2"	2 5/8"
2"	3 1/4"
3"	4 1/2"
4"	5 3/4"