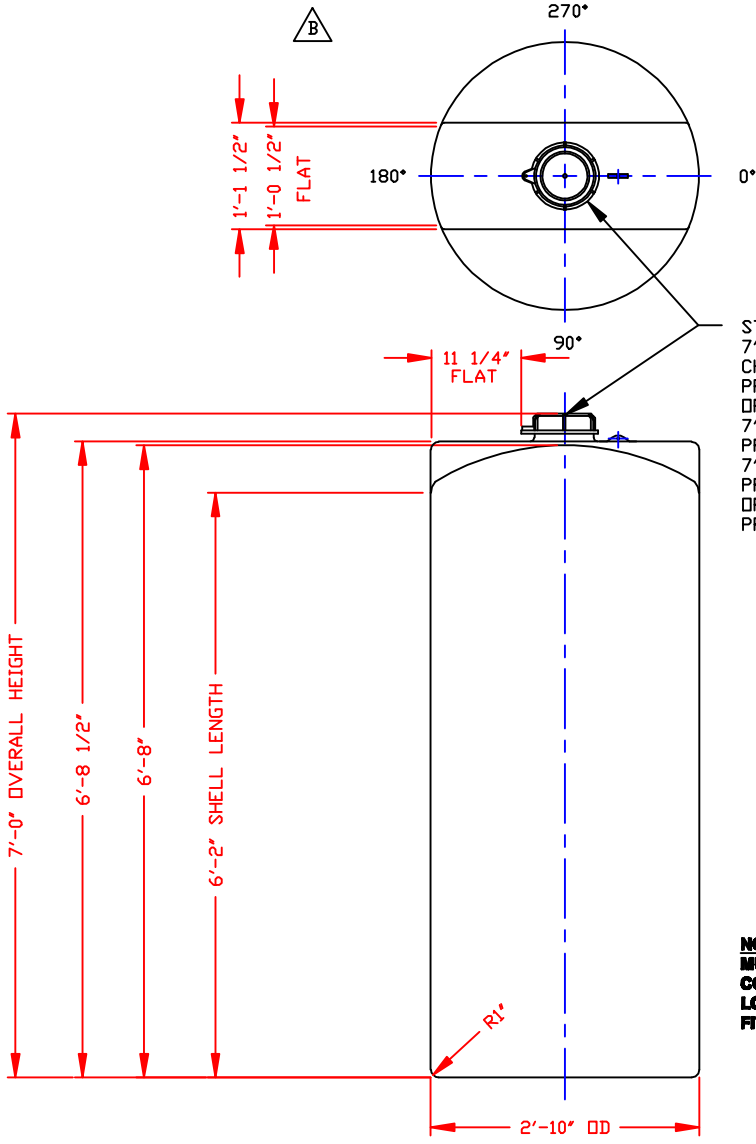


NON-CONTROLLED COPY
 INFORMATION SUBJECT TO CHANGE WITHOUT NOTICE
 VERIFY REV LEVEL OF PAPER COPY WITH REV LEVEL ON PPC WEB SITE

NOZZLE SCHEDULE & ACCESSORIES						
SERVICE	MK	STOCK NO.	SIZE	FITTING	DEG	ELEV




STANDARD COVER:
 7"/TH'D CAP/BLANK/
 CHAMPLS/BLACK PE
 PPC STOCK NO. 4565
 OPTIONAL GASKETS:
 7"/TH'D CAP GSKT/CMPLAS/EPDM
 PPC STOCK NO. 5342
 7"/TH'S CAP GSKT/CMPLAS/BLACK VITON
 PPC STOCK NO 5343
 OPTIONAL COVER: 8"/LID W/RIM VENTED/BLACK/PP
 PPC STOCK NO. 4802

NOTE:
 MUST USE FLEXIBLE
 CONNECTIONS ALL
 LOWER SIDEWALL
 FITTINGS

- NOTES**
- THIS IS A COMPUTER GENERATED DWG. DO NOT REVISE BY HAND.
 - 4" WIDE MOLDED IN GALLONAGE MARKERS IN 25 GAL INCREMENTS UP TO 270 GAL @ 0° - CENTRAL REGION ONLY. AVOID WHEN PLACING FITTINGS.
 - DIMENSIONS WILL VARY ±3% DUE TO VARIATIONS IN MULTIPLE MOLDS & CONDITIONS PREVELANT DURING MANUFACTURE & USAGE.

CALCULATED CAPACITIES/ VOLUME IN U.S. GALLONS		
DESIGN CAP	DOME VOL	TOTAL VOL
284	9	293

CONFIDENTIAL PROPERTY OF
 POLY PROCESSING COMPANY
 NOT FOR REPRINT OR USE
 WITHOUT PERMISSION

DWG TITLE		280 GALLON UPRIGHT TANK	
SCALE:	3/4"=1'-0"	 POLY PROCESSING COMPANY	Central Region P.O. Box 4500 (71521) 28th St. Shreveport La. Shreveport, LA 71202 CSD: 343-7862 FAX: (504) 343-9795
DATE:	9/14/99		IR: MB WILKERSON CK: J. BRANTLEY
REV *B* REMOVED NOTE BY:JB 1/20/10 CK:WM REV *A* ADDED FITTING NOTE BY:MBW 2/11/03 CK:JB		SHEET	COMPUTER FILE
		1 OF 1	1000280 B