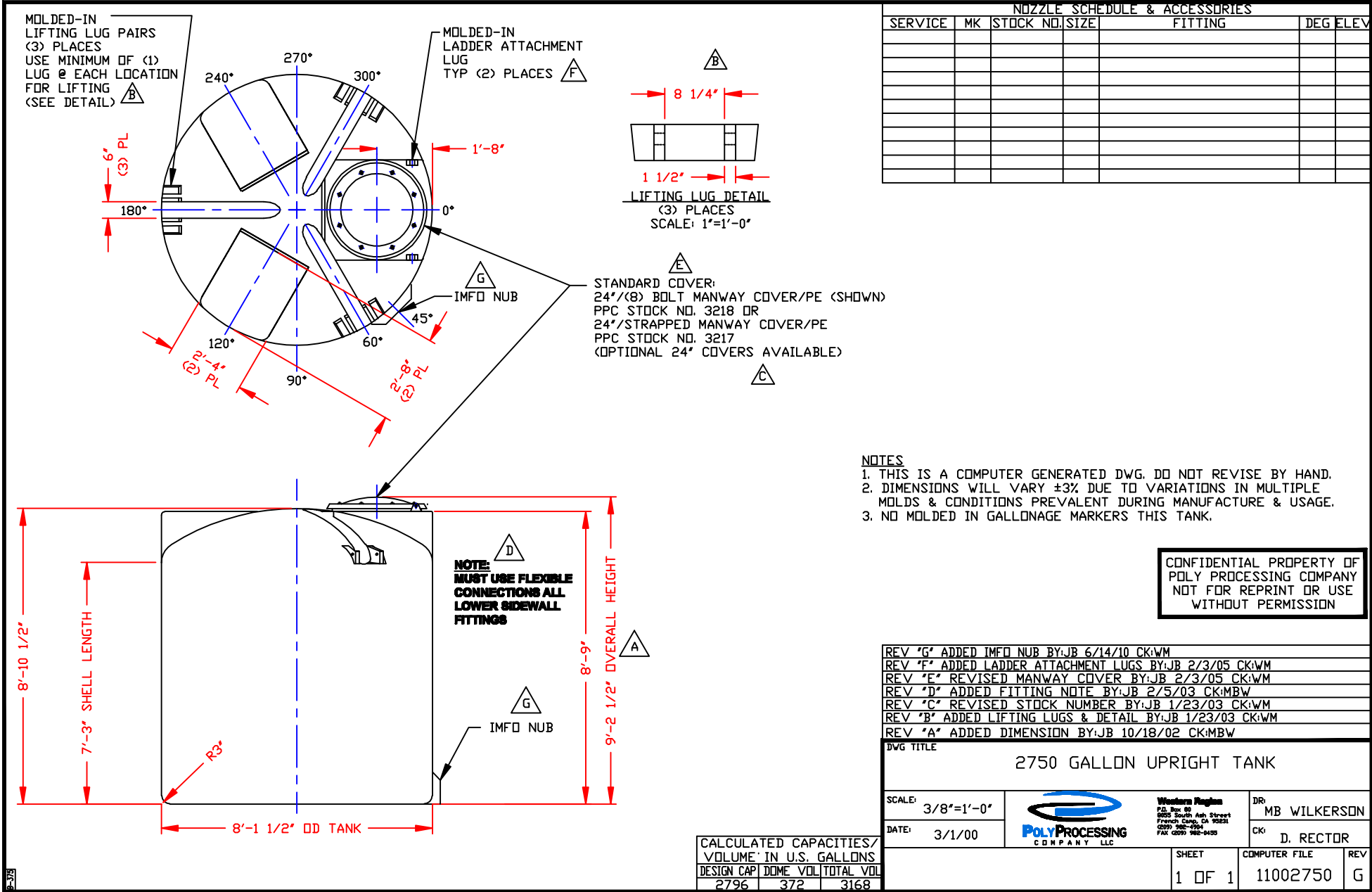


NON-CONTROLLED COPY  
 INFORMATION SUBJECT TO CHANGE WITHOUT NOTICE  
 VERIFY REV LEVEL OF PAPER COPY WITH REV LEVEL ON PPC WEB SITE



NOZZLE SCHEDULE & ACCESSORIES

SERVICE	MK	STOCK NO.	SIZE	FITTING	DEG	ELEV

- NOTES**
1. THIS IS A COMPUTER GENERATED DWG. DO NOT REVISE BY HAND.
  2. DIMENSIONS WILL VARY ±3% DUE TO VARIATIONS IN MULTIPLE MOLDS & CONDITIONS PREVALENT DURING MANUFACTURE & USAGE.
  3. NO MOLDED IN GALLONAGE MARKERS THIS TANK.

CONFIDENTIAL PROPERTY OF  
 POLY PROCESSING COMPANY  
 NOT FOR REPRINT OR USE  
 WITHOUT PERMISSION

REV "G" ADDED IMFO NUB BY:JB 6/14/10 CK:WM
REV "F" ADDED LADDER ATTACHMENT LUGS BY:JB 2/3/05 CK:WM
REV "E" REVISED MANWAY COVER BY:JB 2/3/05 CK:WM
REV "D" ADDED FITTING NOTE BY:JB 2/5/03 CK:MBW
REV "C" REVISED STOCK NUMBER BY:JB 1/23/03 CK:WM
REV "B" ADDED LIFTING LUGS & DETAIL BY:JB 1/23/03 CK:WM
REV "A" ADDED DIMENSION BY:JB 10/18/02 CK:MBW

DWG TITLE: 2750 GALLON UPRIGHT TANK

SCALE: 3/8"=1'-0"	 <b>POLY PROCESSING</b> <small>COMPANY, LLC</small>	<small>Western Pegasus</small> P.O. Box 89 9835 South Ash Street French Camp, CA 95231 (209) 962-9304 FAX: (209) 962-9455	DR: MB WILKERSON
DATE: 3/1/00			CK: D. RECTOR
SHEET 1 OF 1		COMPUTER FILE 11002750	REV G

CALCULATED CAPACITIES/ VOLUME IN U.S. GALLONS		
DESIGN CAP	DOME VOL	TOTAL VOL
2796	372	3168