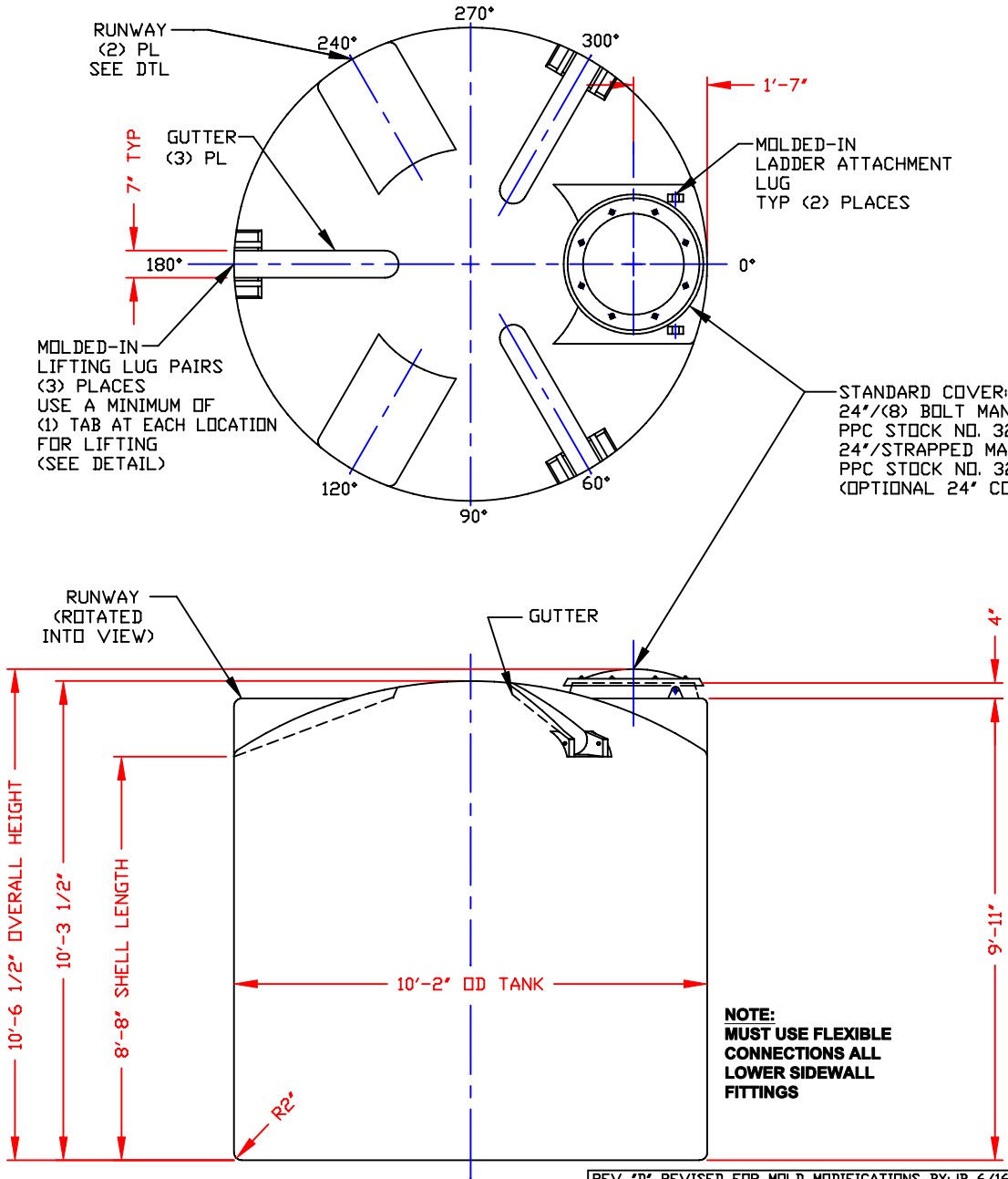


NON-CONTROLLED COPY  
 INFORMATION SUBJECT TO CHANGE WITHOUT NOTICE  
 VERIFY REV LEVEL OF PAPER COPY WITH REV LEVEL ON PPC WEB SITE

NOZZLE SCHEDULE & ACCESSORIES

SERVICE	MK	STOCK NO.	SIZE	FITTING	DEG	ELEV




- NOTES**
- THIS IS A COMPUTER GENERATED DWG. DO NOT REVISE BY HAND.
  - DIMENSIONS WILL VARY ±3% DUE TO VARIATIONS IN MULTIPLE MOLDS & CONDITIONS PREVALENT DURING MANUFACTURE & USAGE.
  - MOLDED IN GALLONAGE MARKERS @ APPROX 35° IN 200 GAL INCREMENTS UP TO 5100 GAL.

CALCULATED CAPACITIES/ VOLUME IN U.S. GALLONS		
DESIGN CAP	DOME VOL	TOTAL VOL
5174	419	5593

CONFIDENTIAL PROPERTY OF  
 POLY PROCESSING COMPANY  
 NOT FOR REPRINT OR USE  
 WITHOUT PERMISSION

**NOTE:**  
 MUST USE FLEXIBLE  
 CONNECTIONS ALL  
 LOWER SIDEWALL  
 FITTINGS

DWG TITLE: 5100 GALLON UPRIGHT TANK

SCALE: 3/8"=1'-0"	 <b>POLYPROCESSING COMPANY</b>	Western Region P.O. Box 90 9525 South Ash Street French Camp, CA 95231 (209) 982-2504 FAX (209) 982-6455	DR: MB WILKERSON
DATE: 3/2/00		CK: D. RECTOR	

SHEET 1 OF 1    COMPUTER FILE 11005100    REV E

REV "D" REVISED FOR MOLD MODIFICATIONS BY:JB 6/16/05 CK:WM  
 REV "C" ADDED FITTING NOTE BY:JB 3/19/03 CK:MBW  
 REV "B" ADDED LIFTING LUGS & DETAIL BY:JB 10/31/02 CK:WM  
 REV "A" ADDED DIMENSION BY:JB 10/21/02 CK:MBW  
 REV "E" REVISED FOR NEW MOLD BY:MBW 10/30/07 CK:WM