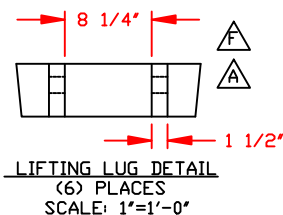
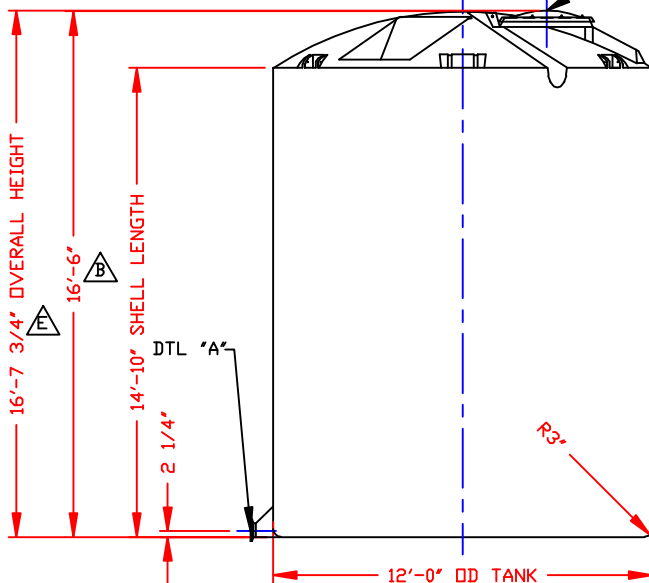
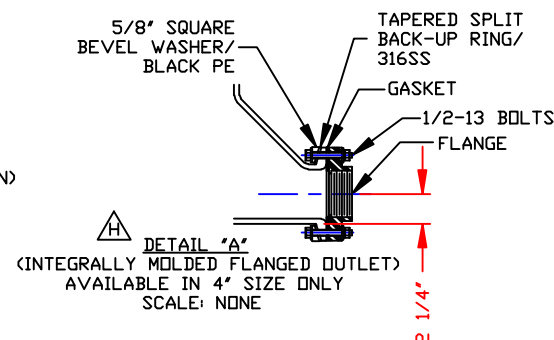
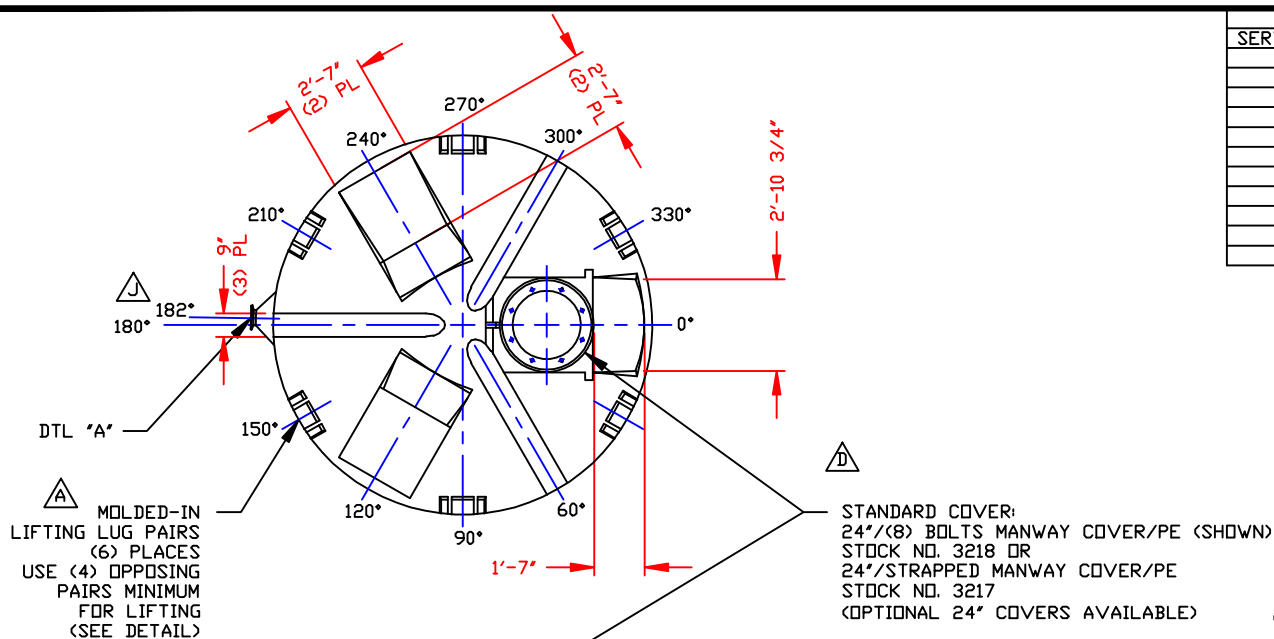


NON-CONTROLLED COPY
 INFORMATION SUBJECT TO CHANGE WITHOUT NOTICE
 VERIFY REV LEVEL OF PAPER COPY WITH REV LEVEL ON PPC WEB SITE

NOZZLE SCHEDULE & ACCESSORIES					
SERVICE	MK	STOCK NO.	SIZE	FITTING	DEG ELEV



NOTE:
 MUST USE FLEXIBLE CONNECTIONS ALL LOWER SIDEWALL FITTINGS

- NOTES**
1. THIS IS A COMPUTER GENERATED DWG. DO NOT REVISE BY HAND.
 2. DIMENSIONS WILL VARY $\pm 3\%$ DUE TO VARIATIONS IN MULTIPLE MOLDS & CONDITIONS PREVALENT DURING MANUFACTURE & USAGE.
 3. NO MOLDED IN GALLONAGE MARKERS THIS TANK.

CALCULATED CAPACITIES/ VOLUME IN U.S. GALLONS		
DESIGN CAP	DOMESTIC VOL	TOTAL VOL
12189	640	12829

CONFIDENTIAL PROPERTY OF
 POLY PROCESSING COMPANY
 NOT FOR REPRINT OR USE
 WITHOUT PERMISSION

DWG TITLE		12150 GALLON IMFO TANK		
SCALE:	1/4"=1'-0"		DR: MB WILKERSON	
DATE:	3/9/00		CK: D. RECTOR	
SHEET		1 OF 1	COMPUTER FILE	REV
			11112150	J

REV "J" REVISED IMFO LOCATION BY:JB 8/7/09 CK:WM
 REV "H" REVISED IMFO STYLE BY:JB 5/5/03 CK:WM
 REV "G" ADDED FITTING NOTE BY:JB 2/13/03 CK:MBW
 REV "F" ADDED FITTING NOTE BY:JB 2/13/03 CK:MBW
 REV "E" REVISED LIFTING LUG DETAIL BY:JB 1/14/03 CK:WM
 REV "D" ADDED DIMENSION BY:JB 10/22/02 CK:MBW
 REV "C" REVISED DOME & HWY CONFIGURATION BY:MBW 8/28/02 CK:JB
 REV "B" REVISED CALCULATED CAPACITY BY:JB 4/1/02 CK:MBW
 REV "A" DID SAY 16'-7 1/2" BY:JB 4/1/02 CK:MBW
 REV "A" ADDED LIFTING LUGS & DETAIL BY:JB 4/1/02 CK:MBW