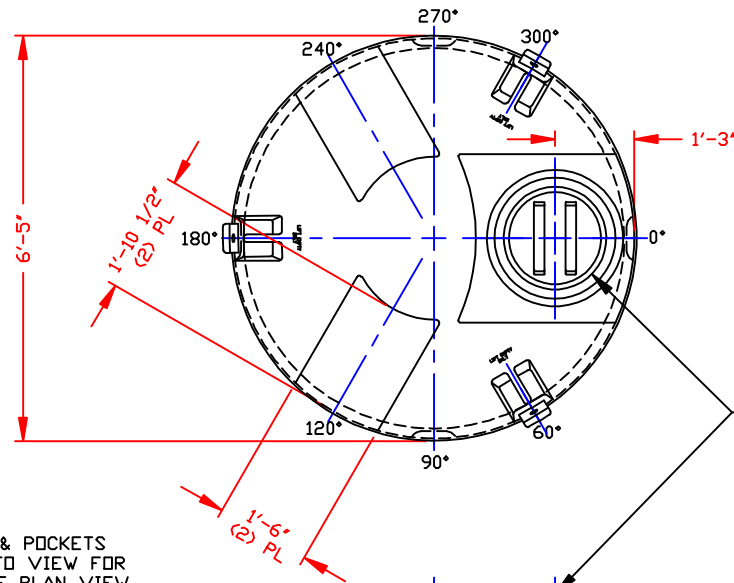
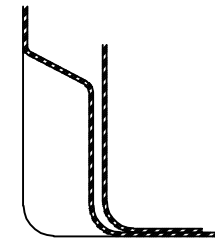


NON-CONTROLLED COPY  
 INFORMATION SUBJECT TO CHANGE WITHOUT NOTICE  
 VERIFY REV LEVEL OF PAPER COPY WITH REV LEVEL ON PPC WEB SITE

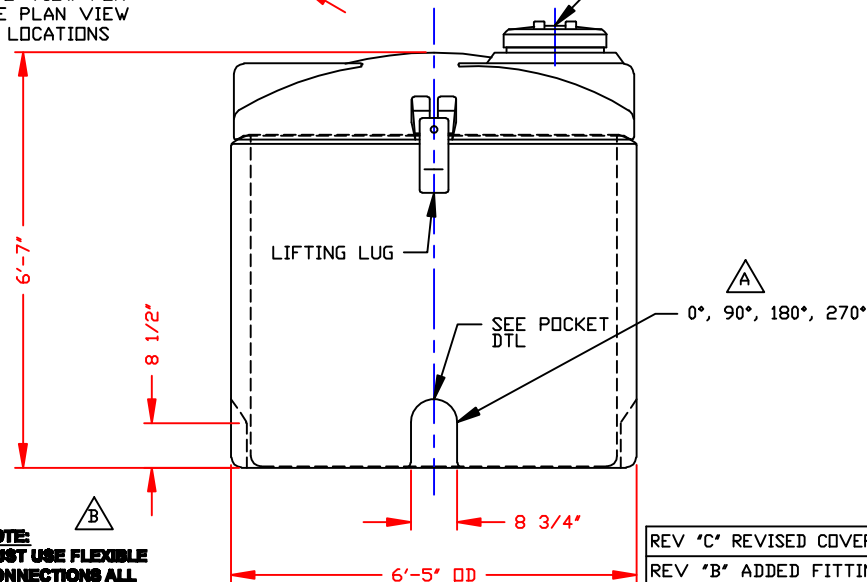


**C**  
 STANDARD COVER:  
 17" CAP/BUTTRESS THR'D  
 BLACK PE  
 STOCK NO. 4558



**POCKET DETAIL**  
 SCALE: NONE

NOTE: LUGS & POCKETS  
 ROTATED INTO VIEW FOR  
 CLARITY. SEE PLAN VIEW  
 FOR DEGREE LOCATIONS




**B**  
 NOTE:  
 MUST USE FLEXIBLE  
 CONNECTIONS ALL  
 LOWER SIDEWALL  
 FITTINGS

**NOTES:**

1. THIS IS A COMPUTER GENERATED DWG. DO NOT REVISE BY HAND.
2. DIMENSIONS WILL VARY  $\pm 3\%$  DUE TO VARIATIONS IN MULTIPLE MOLDS & CONDITIONS PREVALENT DURING MANUFACTURE & USAGE.
3. FOR INNER TANK DTLS SEE COMPUTER FILE NO. 12001000. TITLE "1000 GALLON INNER SAFE-TANK." FOR OUTER TANK DTLS SEE COMPUTER FILE NO. 12101200. TITLE "1000 GALLON OUTER SAFE-TANK/ 1200 GALLON OPEN TOP TANK."

CALCULATED CAPACITIES/ VOLUME IN U.S. GALLONS			
TANK	DESIGN CAP	DOME VOL	TOTAL VOL
INNER	1016	187	1203
OUTER	1215	N/A	1215

CONFIDENTIAL PROPERTY OF  
 POLY PROCESSING COMPANY  
 NOT FOR REPRINT OR USE  
 WITHOUT PERMISSION

DWG TITLE		1000 GALLON SAFE-TANK ASSEMBLY			
SCALE:	1/2"=1'-0"	 <b>POLYPROCESSING</b> COMPANY, LLC	Western Region P.O. Box 48 8025 South Ash Street French Camp, CA 95824 (927) 982-0964 FAX (927) 982-0435		DR: MB WILKERSON
DATE:	6/28/00		CK: J. BRANTLEY		
		SHEET	COMPUTER FILE	REV	
		1 OF 1	12001000A	C	

REV 'C' REVISED COVER BY:JB 7/27/09 CK:WM

REV 'B' ADDED FITTING NOTE  
 BY:MBW 4/16/03 CK:JB

REV 'A' ADDED NOTE & POCKETS IN  
 IN PLAN VIEW BY:JB 1/28/02 CK:WM