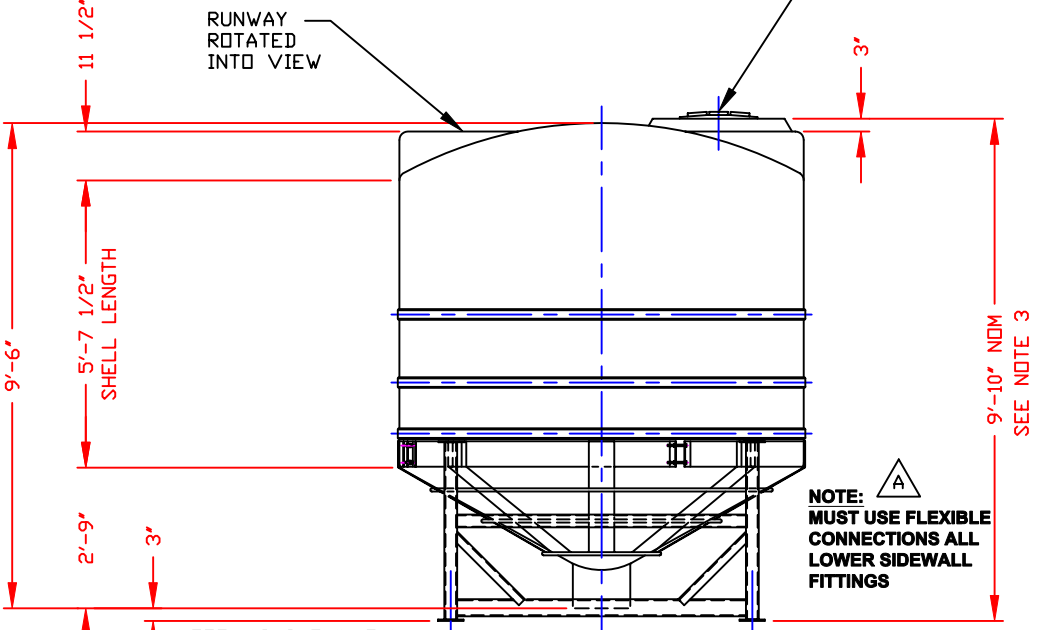
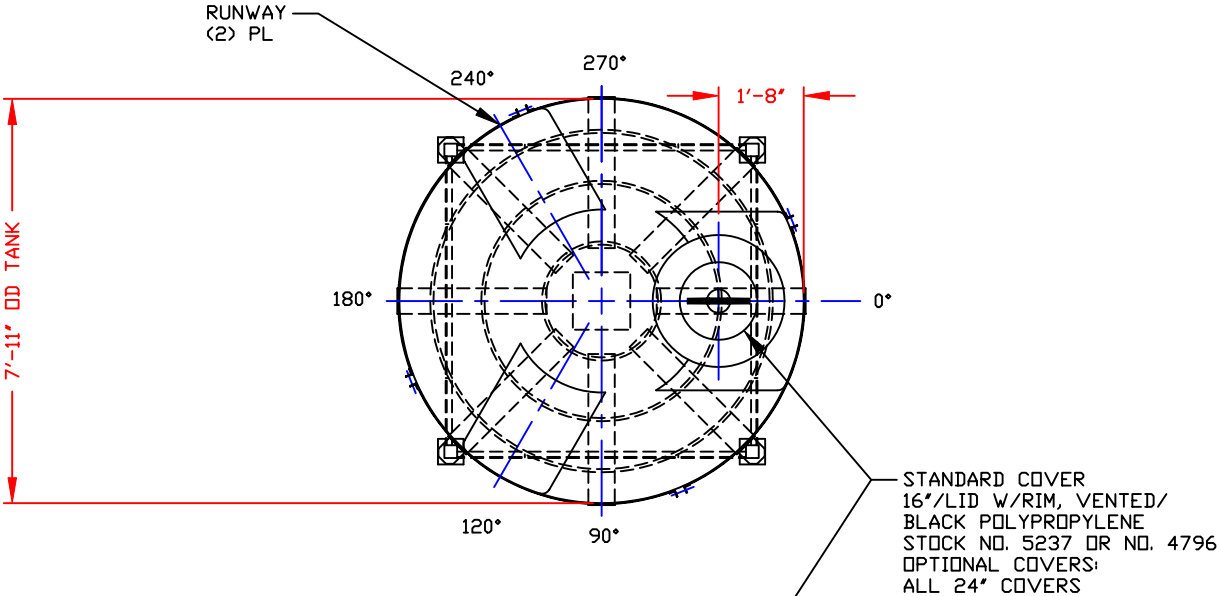


NON-CONTROLLED COPY
 INFORMATION SUBJECT TO CHANGE WITHOUT NOTICE
 VERIFY REV LEVEL OF PAPER COPY WITH REV LEVEL ON PPC WEB SITE

NOZZLE SCHEDULE & ACCESSORIES					
SERVICE	MK	STOCK NO.	SIZE	FITTING	DEG ELEV



NOTE: AS SHOWN TANK TO HAVE 3" NOM CLEARANCE SEE NOTE 3. STAND MAY BE EXTENDED ADDITIONAL 12" WILL INCREASE OVERALL HEIGHT

- NOTES**
1. THIS IS A COMPUTER GENERATED DWG. DO NOT REVISE BY HAND.
 2. DIMENSIONS WILL VARY ±3% DUE TO VARIATIONS IN MULTIPLE MOLDS & CONDITIONS PREVALENT DURING MANUFACTURE & USAGE. WHEN FILLED, TANK MAY SETTLE IN STAND CAUSING VARIATIONS IN BOTTOM CLEARANCE & OVERALL HEIGHT DIMENSIONS.
 3. MOLDED IN GALLONAGE MARKERS IN MANWAY AREA IN 100 GALLON INCREMENTS UP TO 2400 GALLONS.

CALCULATED CAPACITIES/ VOLUME IN U.S. GALLONS		
DESIGN CAP	DOME VOL	TOTAL VOL
2333	198	2531

CONFIDENTIAL PROPERTY OF
 POLY PROCESSING COMPANY
 NOT FOR REPRINT OR USE
 WITHOUT PERMISSION

DWG TITLE			
2300 GAL 30° CONE BOTTOM TANK W/STAND			
SCALE: 3/8"=1'-0"	POLY PROCESSING <small>Company</small>	Central Region P.O. Box 4150 (71211) 2281 Old Stevington Rd. Morgan, LA 71250 504-343-7565 FAX 504-343-6795	DR: MB WILKERSON CK: D. RECTOR
DATE: 2/4/00		SHEET	COMPUTER FILE
		1 OF 1	4002300S A