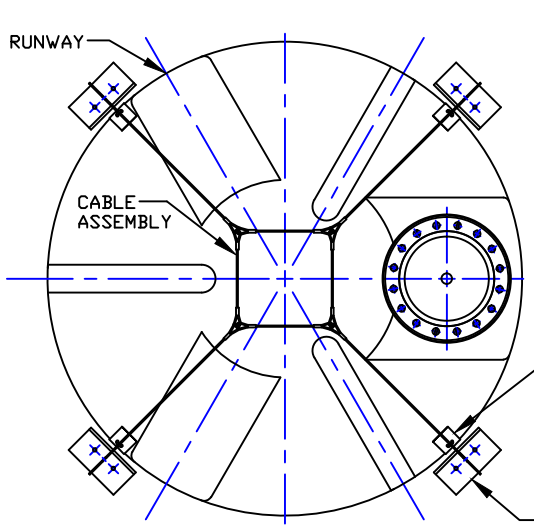
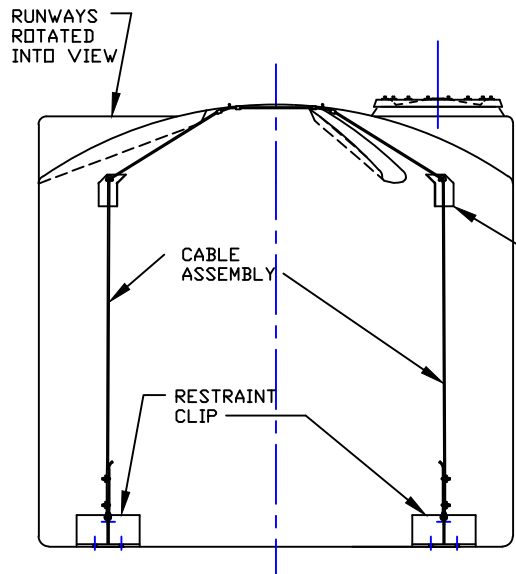


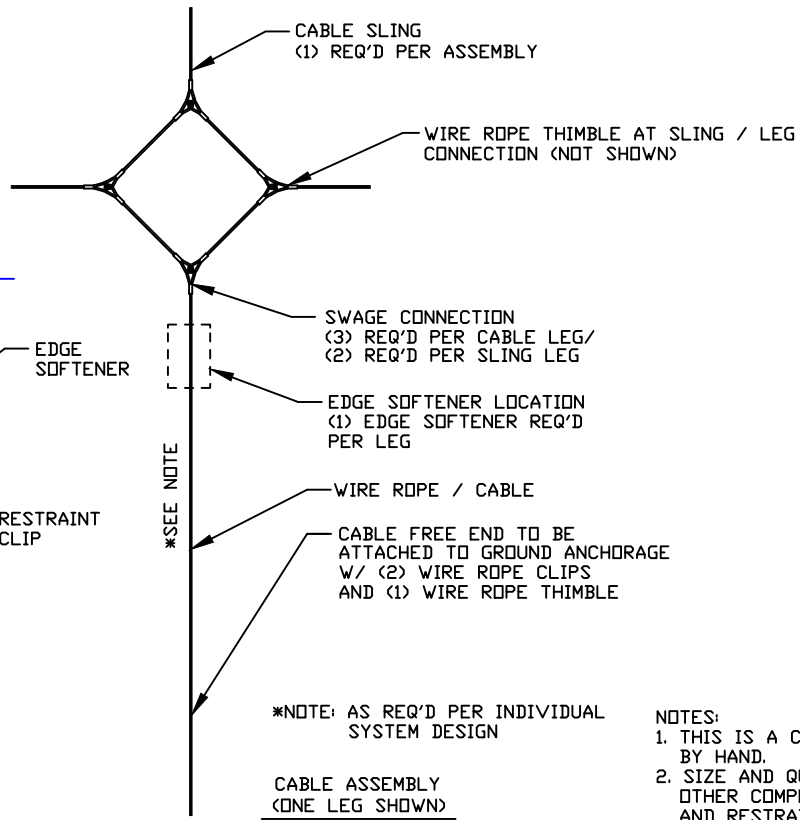
NON-CONTROLLED COPY
 INFORMATION SUBJECT TO CHANGE WITHOUT NOTICE
 VERIFY REV LEVEL OF PAPER COPY WITH REV LEVEL ON PPC WEB SITE



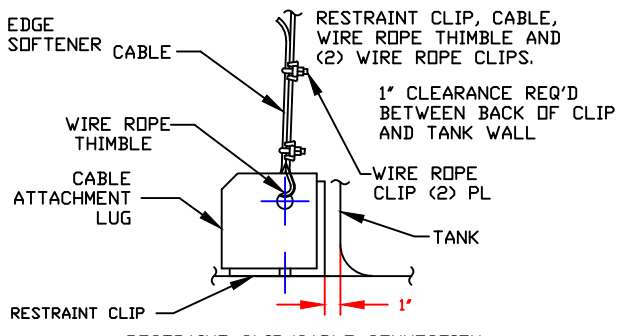
4-WAY CABLE / 4 RESTRAINT CLIP LAYOUT
 (SEE NOTES 3 & 4)



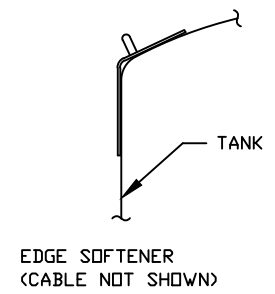
4-WAY CABLE / 4 RESTRAINT CLIP ELEVATION VIEW




CABLE ASSEMBLY
 (ONE LEG SHOWN)



RESTRAINT CLIP/CABLE CONNECTION



- NOTES:
1. THIS IS A COMPUTER GENERATED DRAWING. DO NOT REVISE BY HAND.
 2. SIZE AND QUANTITY OF RESTRAINT CLIPS, CABLE LEGS AND OTHER COMPONENTS MAY VARY ACCORDING TO TANK SIZE AND RESTRAINT SYSTEM RATING.
 3. RESTRAINT SYSTEM MAY CONSIST OF RESTRAINT CLIPS ONLY.
 4. ANCHOR BOLTS TO BE SUPPLIED BY OTHERS.
 5. ANCHOR BOLT LENGTH, EMBEDMENT AND METHOD OF ANCHORAGE TO BE DETERMINED BY A FOUNDATION ENGINEER UPON INSPECTION OF THE INSTALLATION SITE AND REVIEW OF THE APPLICABLE LOADS.

DWG TITLE		RESTRAINT SYSTEM FOR VERTICAL TANKS / 316 SS	
SCALE:	1/2"=1'-0"	 Central Region P.O. Box 459 (71503) Bossier, LA 71202 (504) 343-7865 FAX (504) 343-9795	DR:
DATE:	7/2/10		J. BRANTLEY
SHEET		COMPUTER FILE	REV
1 OF 1		SSRESTSYS	-