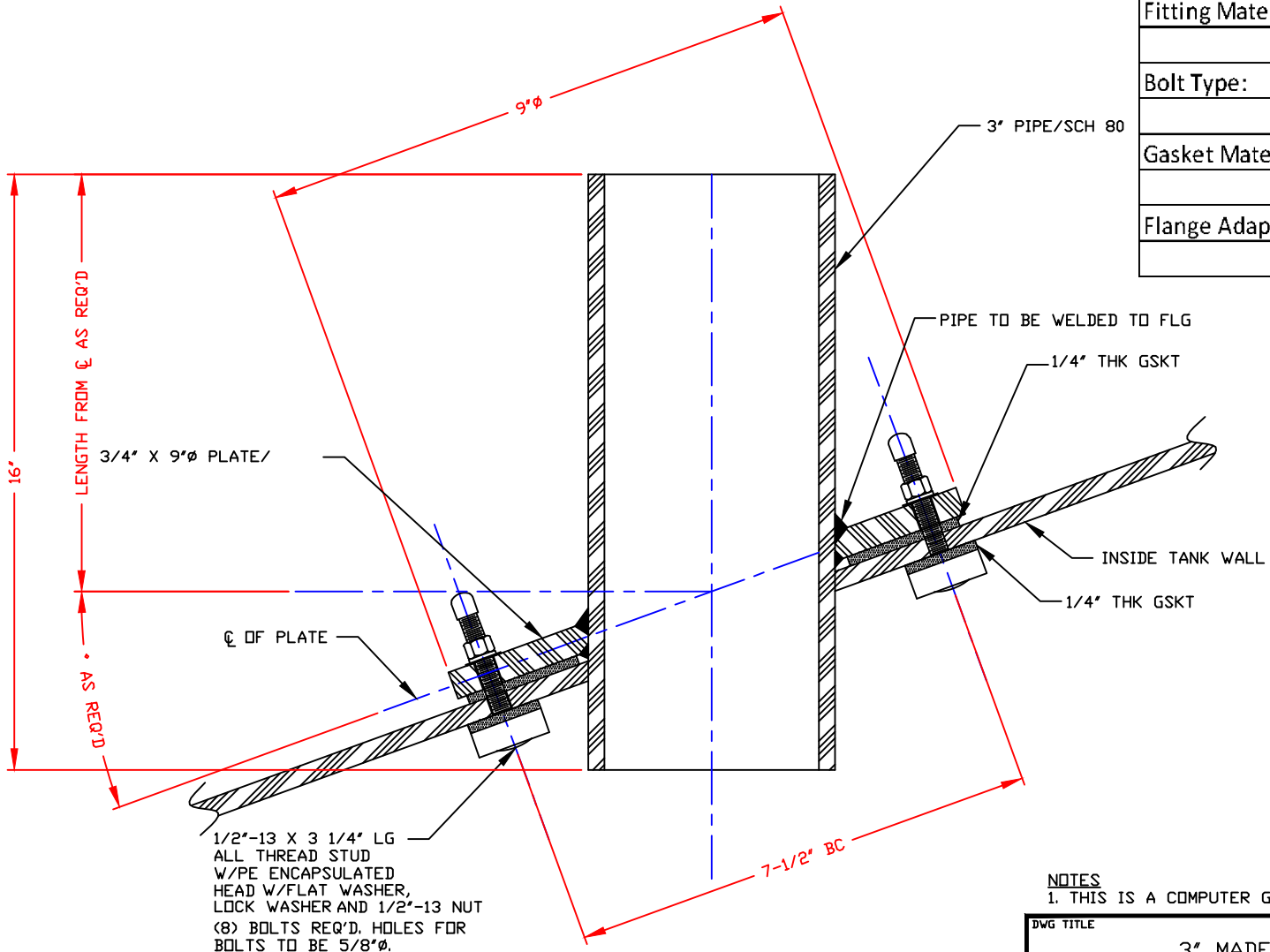



NON-CONTROLLED COPY  
 INFORMATION SUBJECT TO CHANGE WITHOUT NOTICE  
 VERIFY REV LEVEL OF PAPER COPY WITH REV LEVEL ON PPC WEB SITE

Fitting Material:
Bolt Type:
Gasket Material:
Flange Adapter Req'd:



1/2"-13 X 3 1/4" LG  
 ALL THREAD STUD  
 W/PE ENCAPSULATED  
 HEAD W/FLAT WASHER,  
 LOCK WASHER AND 1/2"-13 NUT  
 (8) BOLTS REQ'D. HOLES FOR  
 BOLTS TO BE 5/8"Ø.

**NOTES**  
 1. THIS IS A COMPUTER GENERATED DWG. DO NOT REVISE BY HAND.

DWG TITLE			
3" MADE VERTICAL FITTING			
SCALE:	NONE	 Central Region P.O. Box 4188 8201 Old Springington Rd. Norcross, LA 71025 2140 343-7365 FAX: 214-343-8795	DR: C. DAVIES
DATE:	4/28/10		CK: J. BRANTLEY
SHEET		COMPUTER FILE	REV
1 OF 1		TTDFTG3M	-