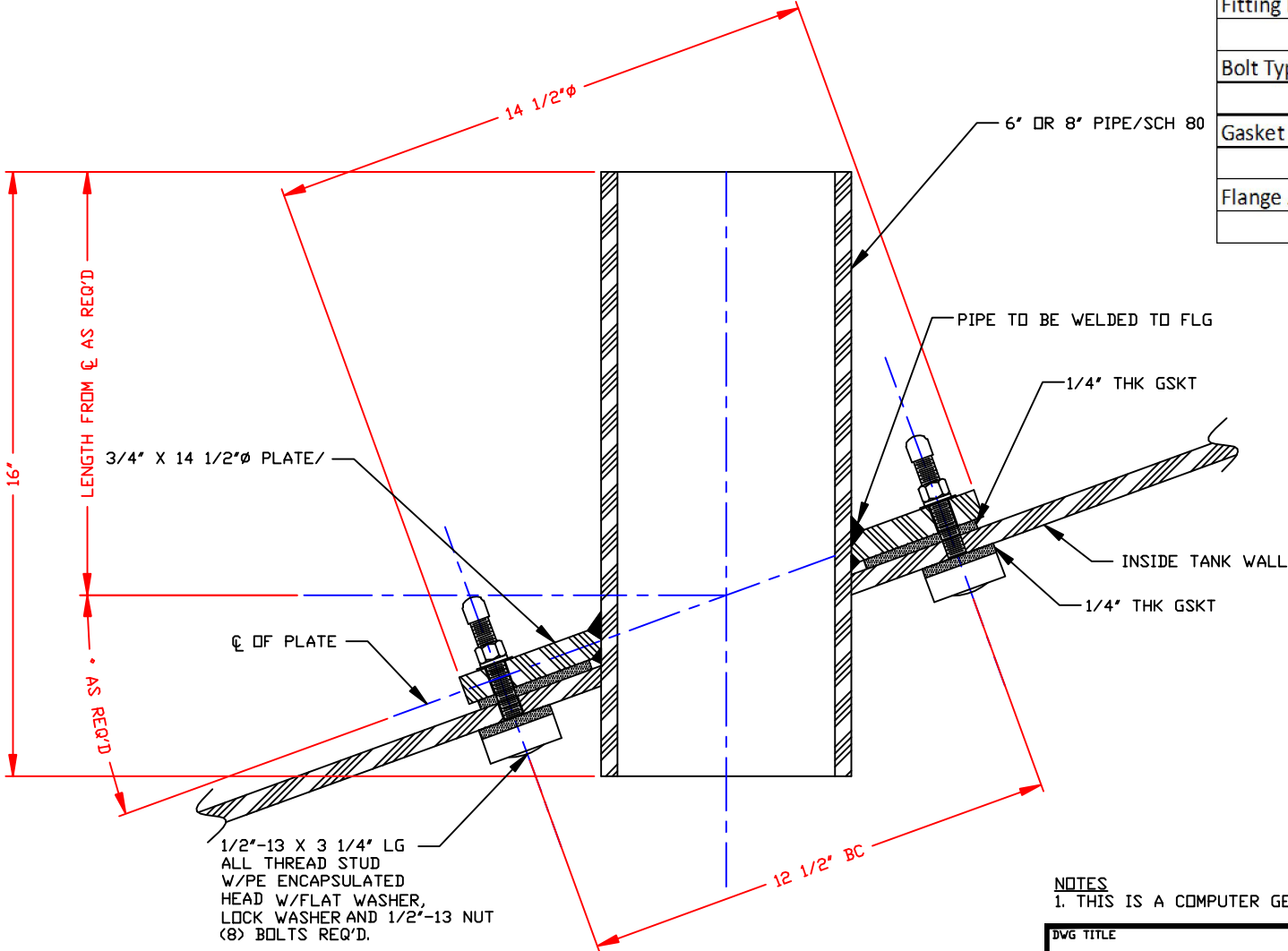



NON-CONTROLLED COPY  
 INFORMATION SUBJECT TO CHANGE WITHOUT NOTICE  
 VERIFY REV LEVEL OF PAPER COPY WITH REV LEVEL ON PPC WEB SITE

Fitting Material:
Bolt Type:
Gasket Material:
Flange Adapter Req'd:



1/2"-13 X 3 1/4" LG  
 ALL THREAD STUD  
 W/PE ENCAPSULATED  
 HEAD W/FLAT WASHER,  
 LOCK WASHER AND 1/2"-13 NUT  
 (8) BOLTS REQ'D.

**NOTES**  
 1. THIS IS A COMPUTER GENERATED DWG. DO NOT REVISE BY HAND.

DWG TITLE			
6" OR 8" MADE VERTICAL FITTING			
SCALE:	NONE	 <b>POLY PROCESSING</b> COMPANY, LLC	DR:
DATE:	4/28/10		<small>Central Region          P.O. Box 4500 (75211)          25th St. Huntington Rd.          New Orleans, LA 70002          (504) 343-7800          FAX (504) 343-9795</small>
			CK:
			J. BRANTLEY
		SHEET	COMPUTER FILE
		1 OF 1	TTDFTGM
			REV
			-