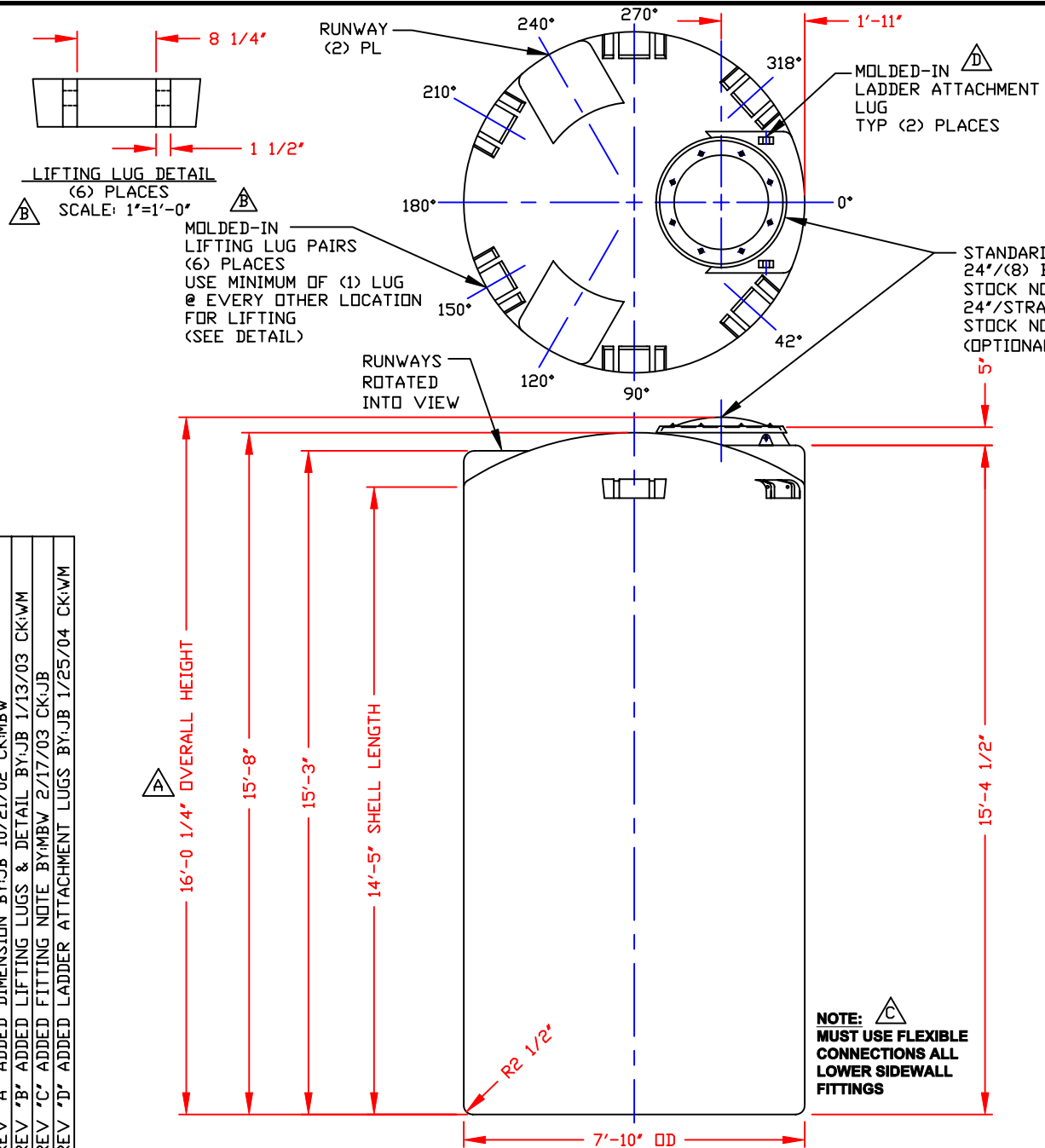
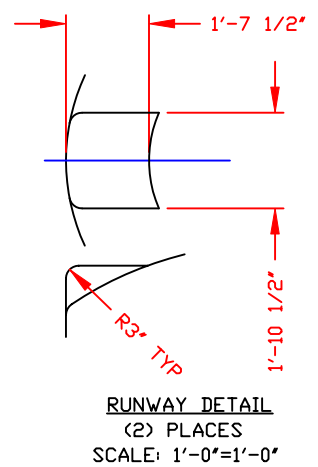


NON-CONTROLLED COPY
 INFORMATION SUBJECT TO CHANGE WITHOUT NOTICE
 VERIFY REV LEVEL OF PAPER COPY WITH REV LEVEL ON PPC WEB SITE



NOZZLE SCHEDULE & ACCESSORIES					
SERVICE	MK	STOCK NO.	SIZE	FITTING	DEG ELEV



NOTES

1. THIS IS A COMPUTER GENERATED DWG. DO NOT REVISE BY HAND.
2. DIMENSIONS WILL VARY ±3% DUE TO VARIATIONS IN MULTIPLE MOLDS & CONDITIONS PREVALENT DURING MANUFACTURE & USAGE.
3. 5" WIDE MOLDED IN GALLONAGE MARKERS @ APPROX 15° UP TO 4800 GAL. AVOID WHEN PLACING FITTINGS.

CALCULATED CAPACITIES/ VOLUME IN U.S. GALLONS		
DESIGN CAP	DOME VOL	TOTAL VOL
5052	192	5244

CONFIDENTIAL PROPERTY OF
 POLY PROCESSING COMPANY
 NOT FOR REPRINT OR USE
 WITHOUT PERMISSION

REV 'A' ADDED DIMENSION BY: JB 10/21/02 CK: MBW
 REV 'B' ADDED LIFTING LUGS & DETAIL BY: JB 1/13/03 CK: WMM
 REV 'C' ADDED FITTING NOTE BY: MBW 2/17/03 CK: JB
 REV 'D' ADDED LADDER ATTACHMENT LUGS BY: JB 1/25/04 CK: WMM

DWG TITLE			
5050 GALLON UPRIGHT TANK			
SCALE:	3/8" = 1'-0"	 POLYPROCESSING COMPANY	DR:
DATE:	9/27/99		MB WILKERSON
		Central Region P.O. Box 4150 (71813) 250 East Sherlington Rd. Monroe, LA 71203 (504) 343-7555 FAX (504) 343-8795	CK:
			D. RECTOR
		SHEET	COMPUTER FILE
		1 OF 1	1005050 D