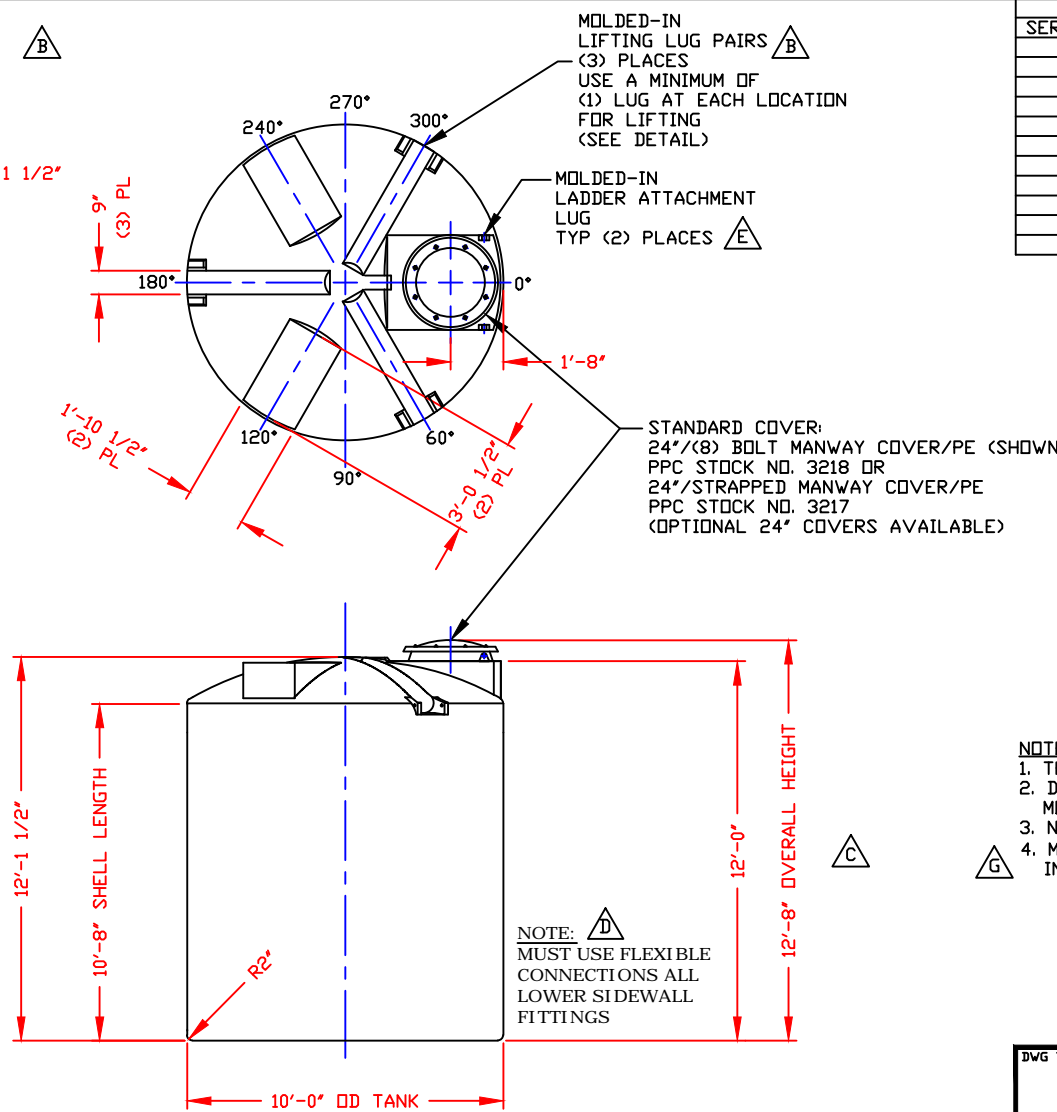
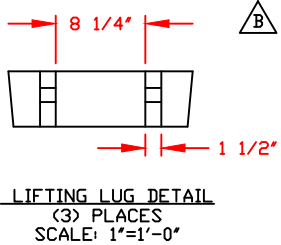


NON-CONTROLLED COPY  
 INFORMATION SUBJECT TO CHANGE WITHOUT NOTICE  
 VERIFY REV LEVEL OF PAPER COPY WITH REV LEVEL ON PPC WEB SITE



NOZZLE SCHEDULE & ACCESSORIES						
SERVICE	MK	STOCK NO.	SIZE	FITTING	DEG	ELEV

**NOTES**

- THIS IS A COMPUTER GENERATED DWG. DO NOT REVISE BY HAND.
- DIMENSIONS WILL VARY ±3% DUE TO VARIATIONS IN MULTIPLE MOLDS & CONDITIONS PREVALENT DURING MANUFACTURE & USAGE.
- NO MOLDED IN GALLONAGE MARKERS THIS TANK.
- MOLDED IN GALLONAGE MARKERS @ APPROX 358" IN 500 GAL INCREMENTS FROM 1500 GAL TO 5000 GAL

CALCULATED CAPACITIES/ VOLUME IN U.S. GALLONS		
DESIGN CAP	DOME VOL	TOTAL VOL
6138	470	6608

CONFIDENTIAL PROPERTY OF  
 PDLY PROCESSING COMPANY  
 NOT FOR REPRINT OR USE  
 WITHOUT PERMISSION

DWG TITLE		6100 GALLON UPRIGHT TANK		
SCALE:	1/4"=1'-0"	 Western Region P.O. Box 40 9525 South Ash Street French Camp, CA 95821 (209) 782-9966 FAX (209) 982-0435	DR:	MB WILKERSON
DATE:	3/2/00		CK:	D. RECTOR
SHEET		COMPUTER FILE	REV	
1 OF 1		11006100	G	

REV "G" NOTE 4 ADDED BY:JB 6/13/17 CK: WM
REV "F" REVISED FOR MOLD MODIFICATIONS BY:JB 6/16/05 CK:WM
REV "E" ADDED LADDER ATTACHMENT LUGS BY:JB 1/28/05 CK:WM
REV "D" ADDED FITTING NOTE BY:JB 3/19/03 CK:MBW
REV "C" ADDED DIMENSION BY:JB 10/21/02 CK:MBW
REV "B" ADDED LIFTING LUGS & DETAILS BY:JB 8/27/02 CK:WM
REV "A" REVISED TO REFLECT MOLD MODIFICATION BY:MBW 2/27/02 CK:JB