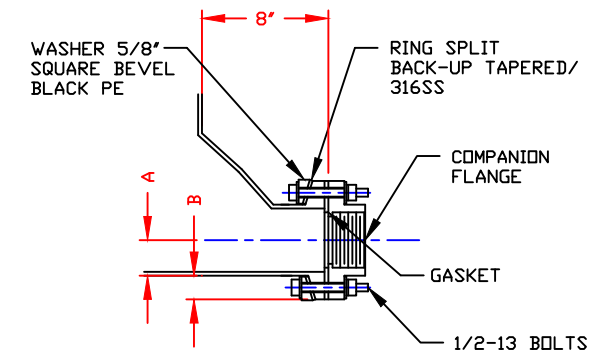
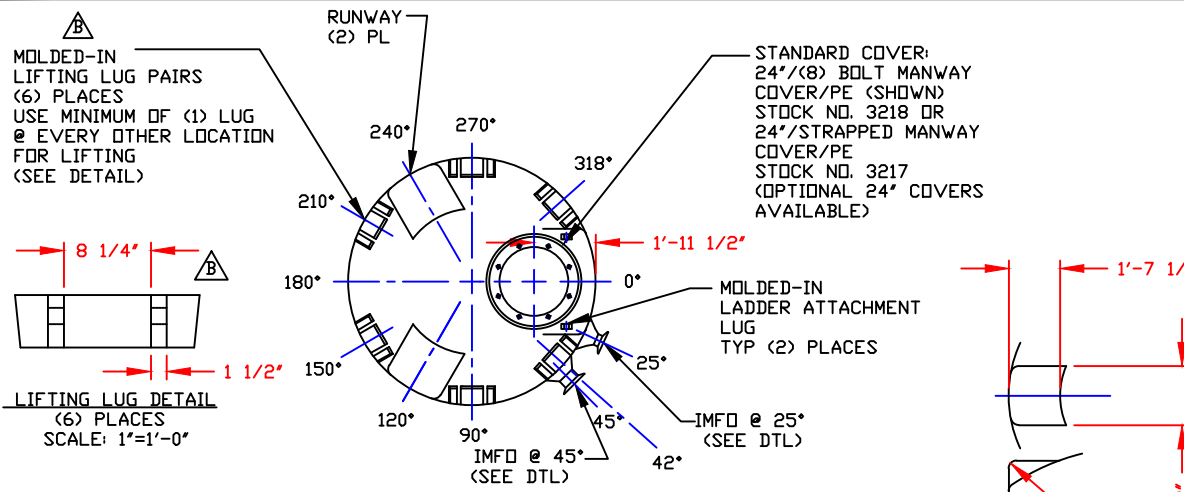


NON-CONTROLLED COPY  
 INFORMATION SUBJECT TO CHANGE WITHOUT NOTICE  
 VERIFY REV LEVEL OF PAPER COPY WITH REV LEVEL ON PPC WEB SITE

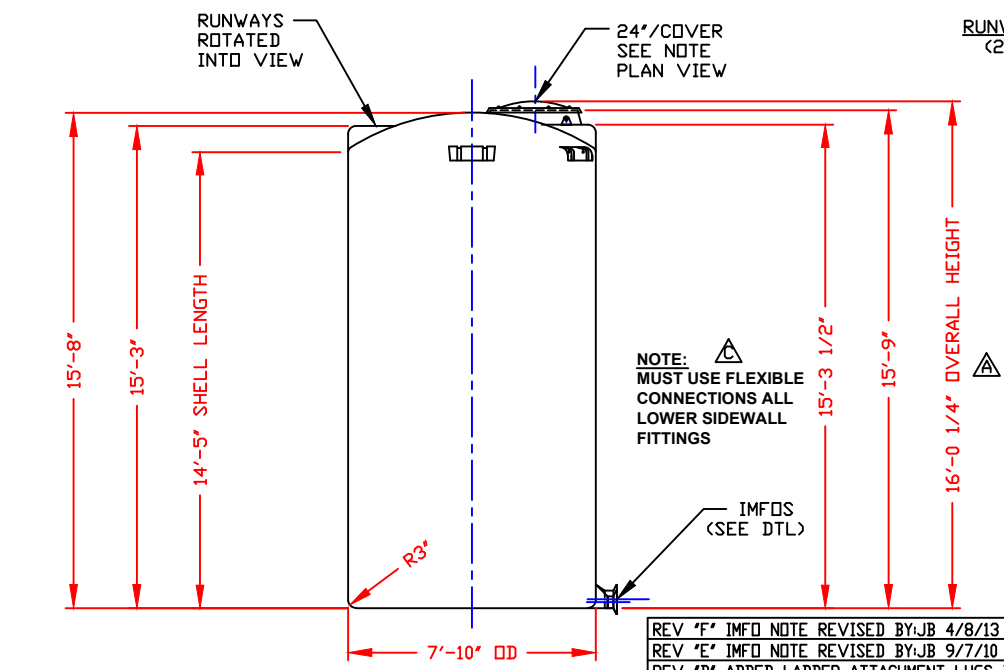
NOZZLE SCHEDULE & ACCESSORIES						
SERVICE	MK	STOCK NO.	SIZE	FITTING	DEG	ELEV



DIMENSION CHART		
PIPE SIZE	A	B
4"	2 1/4"	2 1/4"
6"	3 5/16"	2 3/16"

**IMFD NOZZLE DETAIL**  
 (INTEGRALLY MOLDED FLANGED OUTLET)  
 SCALE: NONE

NOTE: (2) IMFD NOZZLES MAY BE MOLDED IN TANK  
 (1) @ 25° & (1) @ 45°  
 4" IS STANDARD ON BOTH  
 (1) 6" IS AVAILABLE @ EITHER LOCATION, BUT ONLY (1) EITHER OR BOTH MAY BE BLOCKED OFF



- NOTES**
- THIS IS A COMPUTER GENERATED DWG. DO NOT REVISE BY HAND.
  - DIMENSIONS WILL VARY ±3% DUE TO VARIATIONS IN MULTIPLE MOLDS AND CONDITIONS PREVELANT DURING MANUFACTURE AND USAGE.
  - MOLDED IN GALLONAGE MARKERS IN 200 GAL INCREMENTS UP TO 5000 GAL IN MANWAY AREA.

CALCULATED CAPACITIES/ VOLUME IN U.S. GALLONS		
DESIGN CAP	DOME VOL	TOTAL VOL
5052	192	5244

CONFIDENTIAL PROPERTY OF  
 PDLY PROCESSING COMPANY  
 NOT FOR REPRINT OR USE  
 WITHOUT PERMISSION

DWG TITLE <b>5050 GALLON DOUBLE IMFD TANK</b>			
SCALE: 1/4"=1'-0"	 Central Region P.O. Box 4580 FRENCH 2284 Old Springington Rd. Norcross, LA 72005 (770) 343-7800 FAX (770) 343-9795	DR: MB WILKERSON	
DATE: 11/11/99		CK: D. RECTOR	
SHEET 1 OF 1		COMPUTER FILE 1105050	REV F

- REV "F" IMFD NOTE REVISED BY:JB 4/8/13 CK:WM
- REV "E" IMFD NOTE REVISED BY:JB 9/7/10 CK:WM
- REV "D" ADDED LADDER ATTACHMENT LUGS BY:JB 1/25/05 CK:WM
- REV "C" ADDED FITTING NOTE BY:MBW 3/3/03 CK:JB
- REV "B" ADDED LIFTING LUGS & DETAIL BY:JB 1/13/03 CK:WM
- REV "A" ADDED DIMENSION BY:JB 10/21/02 CK:MBW