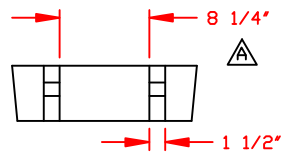
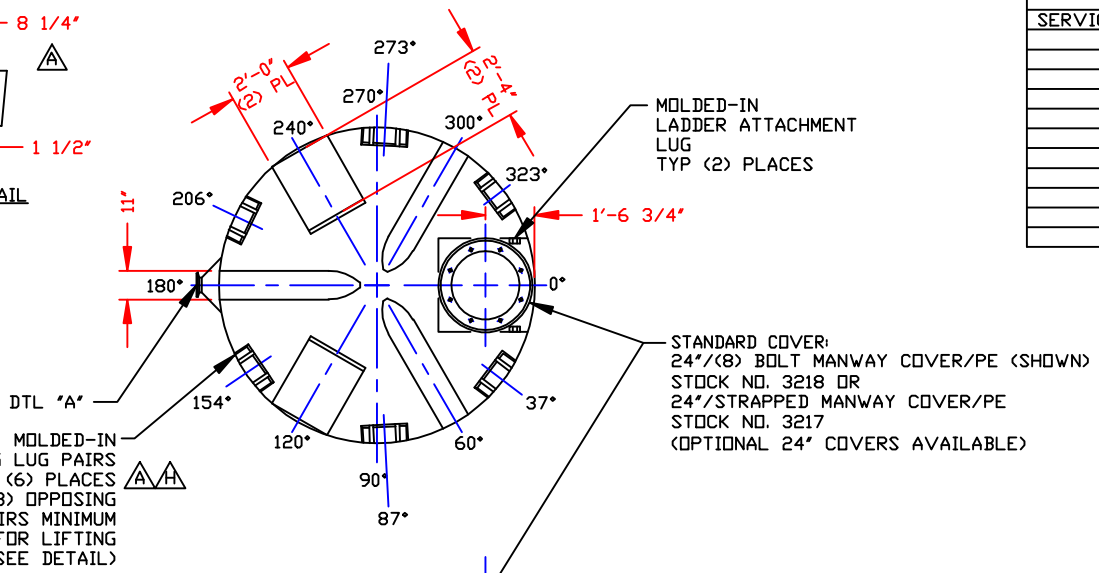


NON-CONTROLLED COPY  
 INFORMATION SUBJECT TO CHANGE WITHOUT NOTICE  
 VERIFY REV LEVEL OF PAPER COPY WITH REV LEVEL ON PPC WEB SITE



LIFTING LUG DETAIL  
 (6) PLACES  
 SCALE: 1"=1'-0"

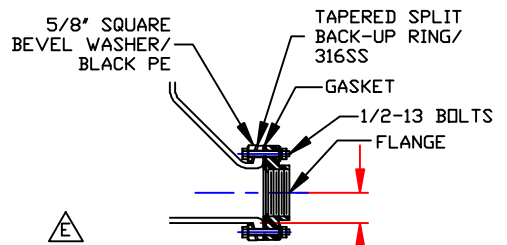
MOLDED-IN  
 LIFTING LUG PAIRS  
 USE (3) OPPOSING  
 PAIRS MINIMUM  
 FOR LIFTING  
 (SEE DETAIL)



MOLDED-IN  
 LADDER ATTACHMENT  
 LUG  
 TYP (2) PLACES

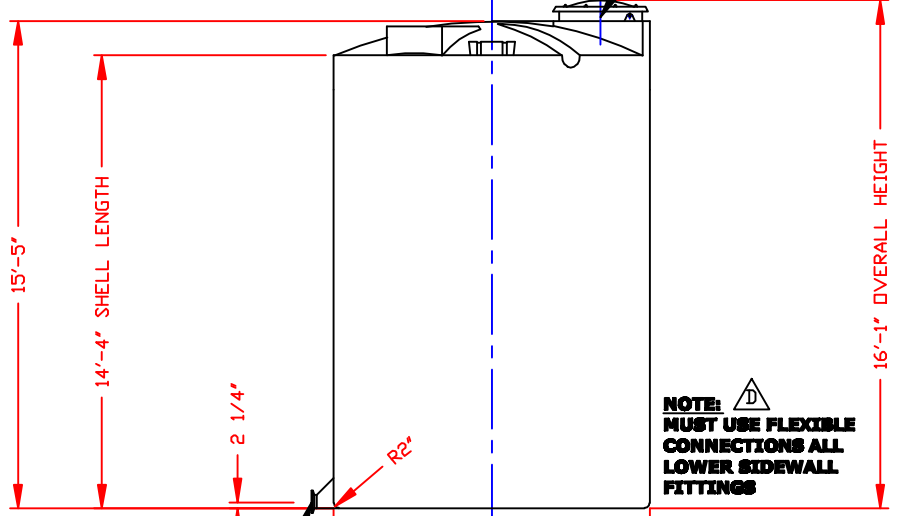
STANDARD COVER:  
 24" (8) BOLT MANWAY COVER/PE (SHOWN)  
 STOCK NO. 3218 OR  
 24"/STRAPPED MANWAY COVER/PE  
 STOCK NO. 3217  
 (OPTIONAL 24" COVERS AVAILABLE)

NOZZLE SCHEDULE & ACCESSORIES						
SERVICE	MK	STOCK NO.	SIZE	FITTING	DEG	ELEV



DETAIL "A"  
 (INTEGRALLY MOLDED FLANGED OUTLET)  
 AVAILABLE IN 4" SIZE ONLY  
 SCALE: NONE

- NOTES**
1. THIS IS A COMPUTER GENERATED DWG. DO NOT REVISE BY HAND.
  2. DIMENSIONS WILL VARY ±3% DUE TO VARIATIONS IN MULTIPLE MOLDS & CONDITIONS PREVALENT DURING MANUFACTURE & USAGE.
  3. NO MOLDED IN GALLONAGE MARKERS THIS TANK.



**NOTE:** **MUST USE FLEXIBLE CONNECTIONS ALL LOWER SIDEWALL FITTINGS**

CALCULATED CAPACITIES/ VOLUME IN U.S. GALLONS		
DESIGN CAP	DOME VOL	TOTAL VOL
8050	250	8300

CONFIDENTIAL PROPERTY OF  
 POLY PROCESSING COMPANY  
 NOT FOR REPRINT OR USE  
 WITHOUT PERMISSION

DWG TITLE		8050 GALLON IMFO TANK		
SCALE:	1/4"=1'-0"		Western Region	DR: MB WILKERSON
DATE:	3/9/00		8050 South Ash Street French Camp, CA 95231 CITY 916-954-0200 FAX (209) 982-0455	CK: D. RECTOR
REV "H" REVISED LIFTING LUG LOCATIONS BY:JB 10/1/09 CK:WM		SHEET 1 OF 1		
REV "G" REVISED FOR MOLD MODIFICATIONS BY:MBW 3/23/07 CK:WM		COMPUTER FILE 11108050		
REV "F" REVISED MANWAY COVER BY:JB 5/9/06 CK:WM		REV H		
REV "E" REVISED IMFO STYLE BY:JB 4/30/03 CK:WM				
REV "D" ADDED FITTING NOTE BY:JB 2/27/03 CK:MBW				
REV "C" REVISED STOCK NUMBER BY:JB 2/27/03 CK:MBW				
REV "B" ADDED DIMENSION BY:JB 10/21/02 CK:MBW				
REV "A" ADDED LIFTING LUGS & DETAIL BY:JB 8/22/02 CK:WM				