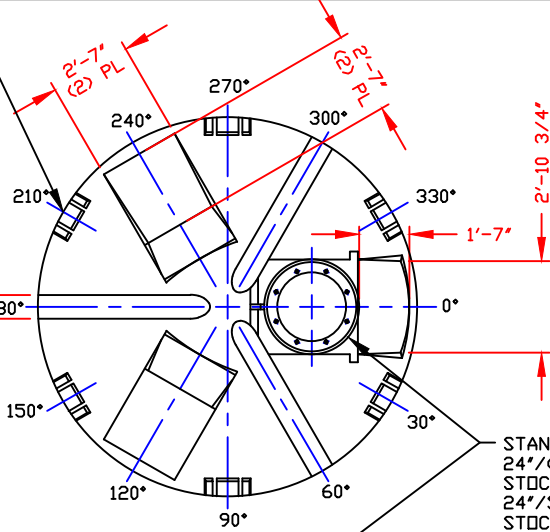
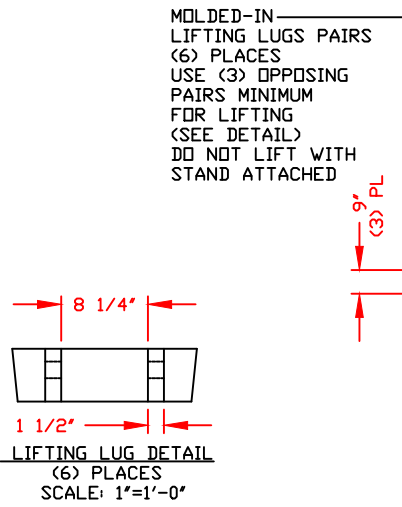


NON-CONTROLLED COPY  
 INFORMATION SUBJECT TO CHANGE WITHOUT NOTICE  
 VERIFY REV LEVEL OF PAPER COPY WITH REV LEVEL ON PPC WEB SITE

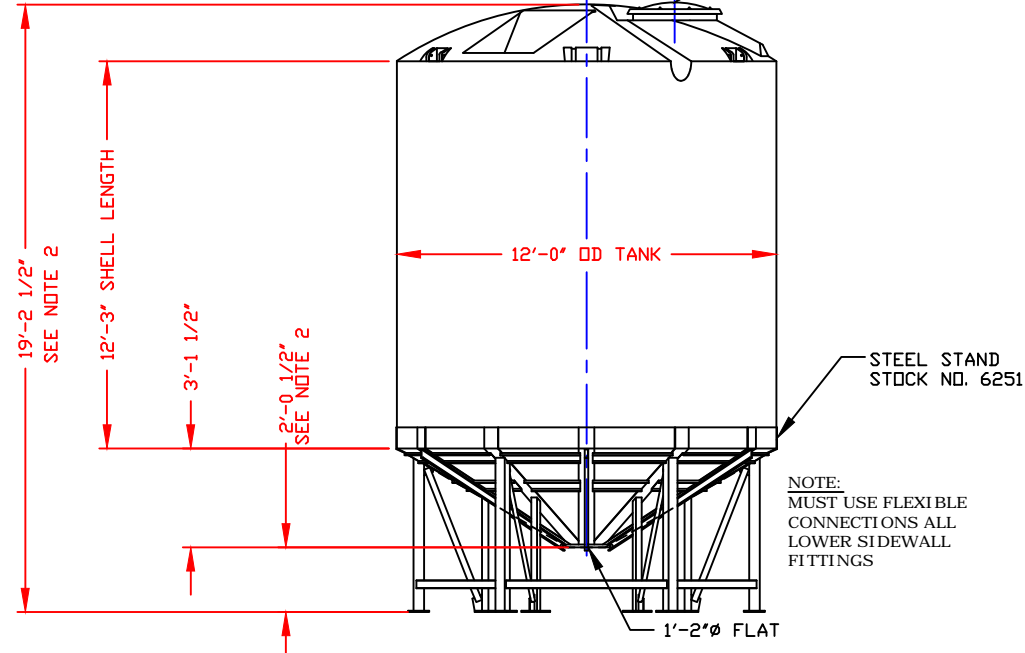
NOZZLE SCHEDULE & ACCESSORIES					
SERVICE	MK	STOCK NO.	SIZE	FITTING	DEG ELEV



STANDARD COVER:  
 24" (8) BOLTS MANWAY COVER/PE (SHOWN)  
 STOCK NO. 3218 OR  
 24" STRAPPED MANWAY COVER/PE  
 STOCK NO. 3217  
 (OPTIONAL 24" COVERS AVAILABLE)


**NOTES**

- THIS IS A COMPUTER GENERATED DWG. DO NOT REVISE BY HAND.
- DIMENSIONS WILL VARY ±3% DUE TO VARIATIONS IN MULTIPLE MOLDS & CONDITIONS PREVALENT DURING MANUFACTURE & USAGE. WHEN FILLED, TANK MAY SETTLE IN STAND CAUSING VARIATIONS IN BOTTOM CLEARANCE & OVERALL HEIGHT DIMENSIONS.
- NO MOLDED IN GALLONAGE MARKERS THIS TANK.



CALCULATED CAPACITIES/ VOLUME IN U.S. GALLONS		
DESIGN CAP	DOMED VOL	TOTAL VOL
10988	780	11768

CONFIDENTIAL PROPERTY OF  
 POLY PROCESSING COMPANY  
 NOT FOR REPRINT OR USE  
 WITHOUT PERMISSION

DWG TITLE			
10950 GALLON 30° CONE BOTTOM TANK W/STEEL STAND			
SCALE:	1/4"=1'-0"	 Western Region P.O. Box 88 3025 South Ash Street French Camp, CA 92521 (925) 982-1004 FAX (925) 982-0435	DR: MB WILKERSON
DATE:	5/25/00		CK: J. BRANTLEY
SHEET		COMPUTER FILE	REV
1 OF 1		14110950S	B

REV "B" ADDED FITTING NOTE BY:JB 10/24/03 CK:WM  
 REV "A" REVISED FOR MOLD MODIFICATIONS BY:JB 10/24/03 CK:WM