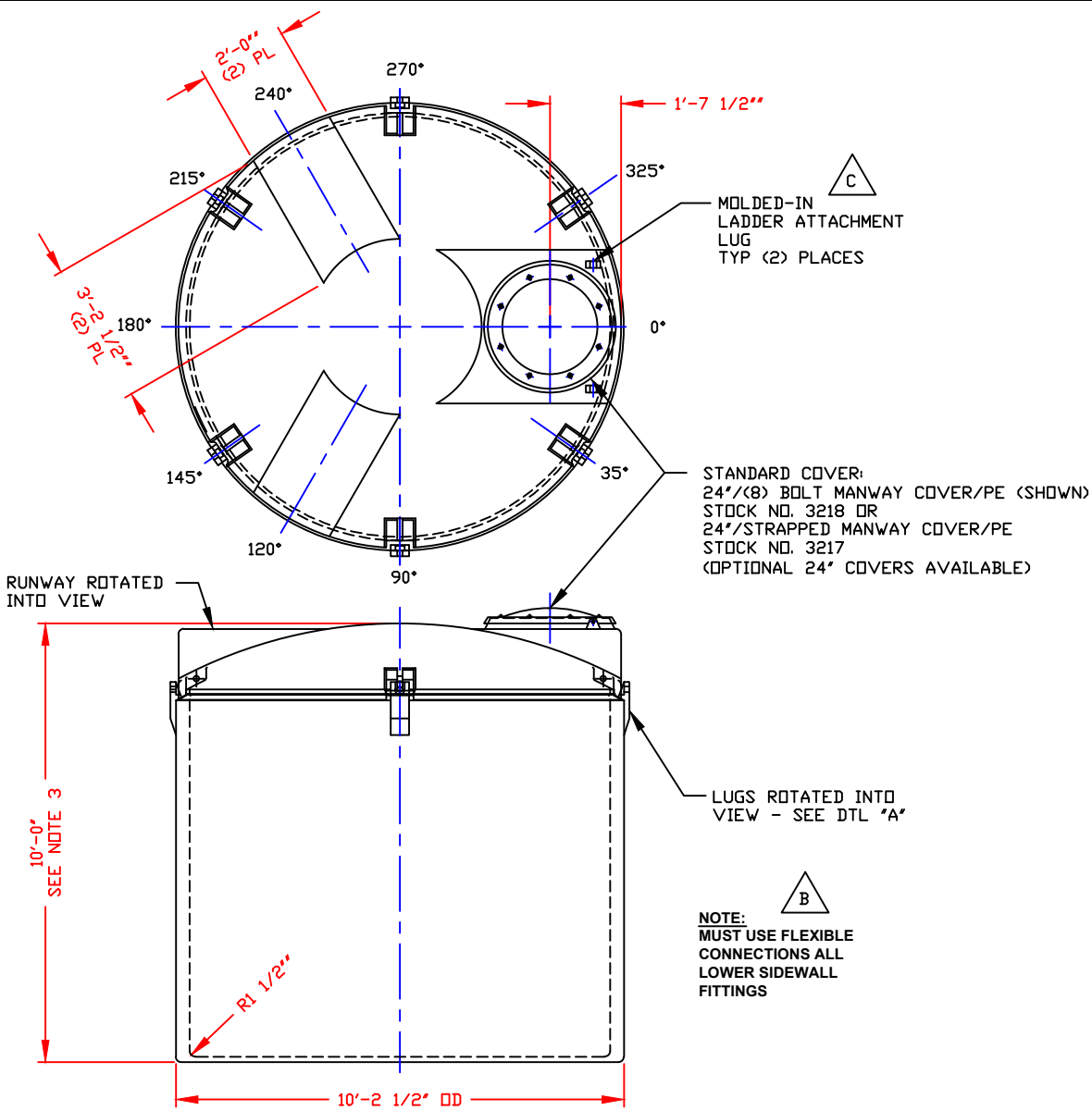
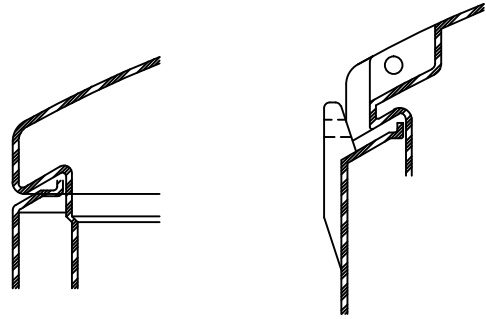


NON-CONTROLLED COPY
 INFORMATION SUBJECT TO CHANGE WITHOUT NOTICE
 VERIFY REV LEVEL OF PAPER COPY WITH REV LEVEL ON PPC WEB SITE



NOZZLE SCHEDULE & ACCESSORIES					
SERVICE	MK	STOCK NO.	SIZE	FITTING	DEG ELEV



- NOTES:
1. THIS IS A COMPUTER GENERATED DWG. DO NOT REVISE BY HAND.
 2. DIMENSIONS WILL VARY ±3% DUE TO VARIATIONS IN MULTIPLE MOLDS & CONDITIONS PREVALENT DURING MANUFACTURE & USAGE.
 3. OVERALL HEIGHT DIMENSION WILL VARY WITH THE PENETRATION OF THE INNER TANK INTO THE OUTER TANK.
 4. NO MOLDED IN GALLONAGE MARKERS THESE TANKS.
 5. FOR INNER TANK DTLS SEE COMPUTER FILE NO. 2004400, TITLE "4400 GALLON INNER SAFE-TANK" FOR OUTER TANK DTLS SEE COMPUTER FILE NO. 2104950, TITLE "4400 GALLON OUTER SAFE-TANK/4950 GALLON OPEN TOP TANK."

CALCULATED CAPACITIES/ VOLUME IN U.S. GALLONS			
TANK	DESIGN CAP	DOME VOL	TOTAL VOL
INNER	4385	437	4822
OUTER	4994	N/A	4994

CONFIDENTIAL PROPERTY OF
 POLY PROCESSING COMPANY
 NOT FOR REPRINT OR USE
 WITHOUT PERMISSION

DWG TITLE 4400 GALLON SAFE-TANK ASSEMBLY			
SCALE: 3/8"=1'-0"		Central Region P.O. Box 4589 2524 Old Springington Rd. Bossier, LA 70605 CSD: 343-7863 FAX: CSD: 343-9795	DR: MB WILKERSON
DATE: 12/7/99		CSD: D. RECTOR	REV C
SHEET 1 OF 1		COMPUTER FILE 2004400A	

REV "C" ADDED LADDER ATTACHMENT LUGS BY:JB 8/30/04 CK:WM
 REV "B" ADDED FITTING NOTE BY:MBW 4/16/03 CK:JB
 REV "A" REDRAWN SHOWING MOLD MODIFICATIONS BY:MBW 5/15/02 CK:JB