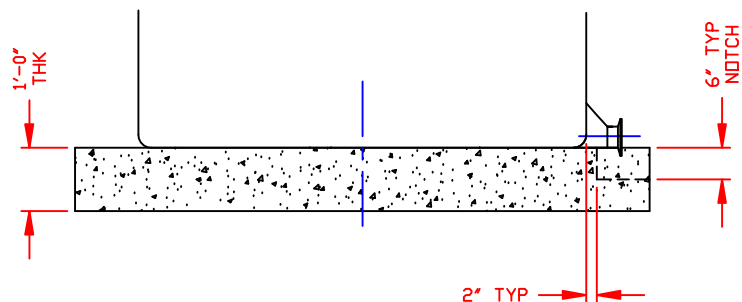



NOTE:
ELEVATED CONCRETE PAD
TO BE 24" LARGER THAN
TANK DIAMETER

NOTCH LOCATION TO BE
DETERMINED BY DEGREE
LOCATION OF IMFO



2" TYP
NOTE:
NOTCH STARTS 2"
FROM TANK STRAIGHT WALL

NOTE:
DRAWING IS FOR DIMENSION REFERENCE ONLY
NOT INTENDED FOR FABRICATION

DWG TITLE		SQUARE CONCRETE IMFO PAD		
SCALE:	1/2"=1'-0"	 POLY PROCESSING SOLUTIONS. SIMPLIFIED.	IR:	J, BRANTLEY
DATE:	2/10/11		Central Region P.O. Box 4550 (75251) 25th (Old) Worthington Rd. Houston, LA 77052 CSD: 343-7562 FAX (CSB) 343-9795	CK:
		SHEET	COMPUTER FILE	REV
		1 OF 1	IMFOPADSQ	-