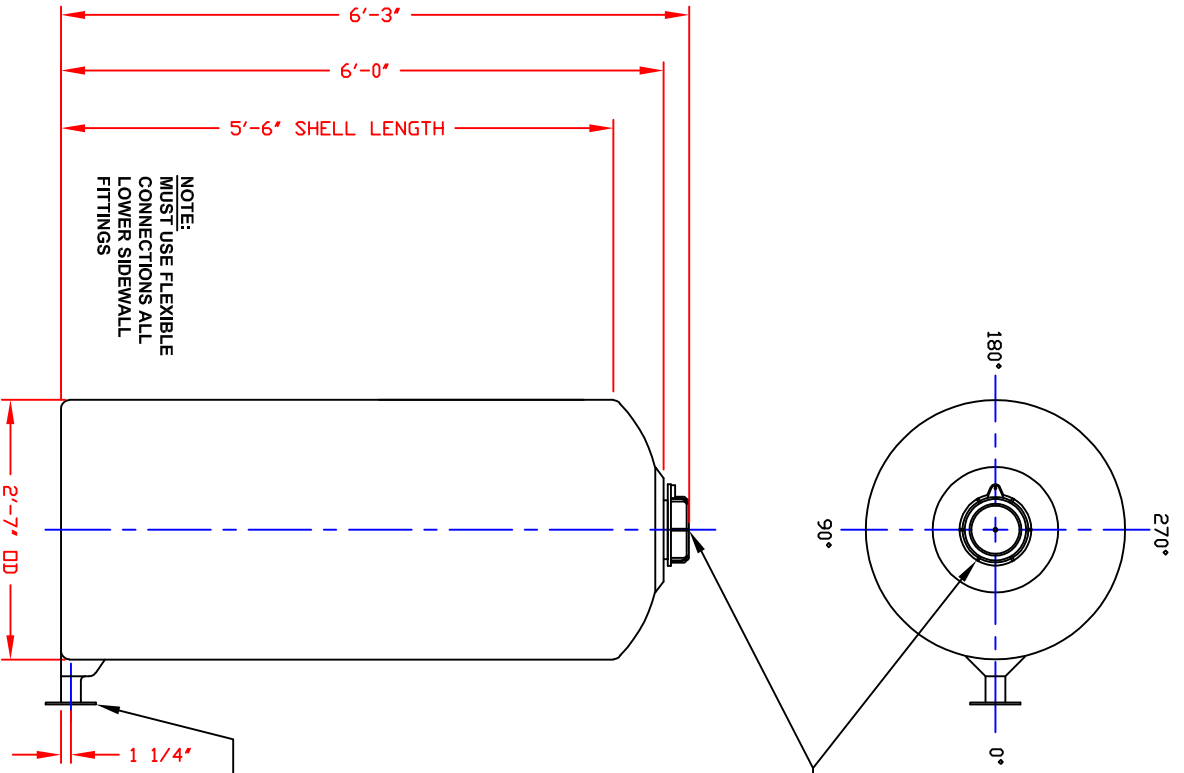
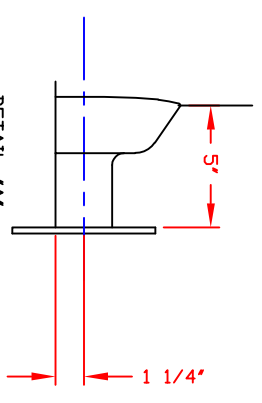


NON-CONTROLLED COPY
 INFORMATION SUBJECT TO CHANGE WITHOUT NOTICE
 VERIFY REV LEVEL OF PAPER COPY WITH REV LEVEL ON PPC WEB SITE



STANDARD COVER
 7"/TH'D CAP/BLANK/CHMPLS/BLACK/PE
 STOCK NO. 4565




DETAIL 'A'
 (INTEGRALLY MOLDED FLANGED OUTLET)
 AVAILABLE IN 2' SIZE ONLY

- NOTES**
1. THIS IS A COMPUTER GENERATED DWG. DO NOT REVISE BY HAND.
 2. MOLDED IN GALLONAGE MARKERS IN 50 GALLON INCREMENTS UP TO 245 GALLON ON SIDEWALL.
 3. DIMENSIONS WILL VARY ±3% DUE TO VARIATIONS IN MULTIPLE MOLDS & CONDITIONS PREVALENT DURING MANUFACTURE & USAGE.

NOTE:
 MUST USE FLEXIBLE CONNECTIONS ALL LOWER SIDEWALL FITTINGS

CALCULATED CAPACITIES/ VOLUME IN U.S. GALLONS	DESIGN CAP	DOME VOL	TOTAL VOL
210	9		219

CONFIDENTIAL PROPERTY OF
 POLY PROCESSING COMPANY
 NOT FOR REPRINT OR USE
 WITHOUT PERMISSION

DWG TITLE		200 GALLON IMFD TANK	
SCALE:	3/4"=1'-0"	 <p>POLY PROCESSING SOLUTIONS, SUPERLET</p>	Western Region 8000 South 4th Street Cottonwood, AZ 85622 PH: 609 966-4000
DATE:	09/25/19		
SHEET		COMPUTER FILE	REV
1 OF 1		IMFD-F-00200	-